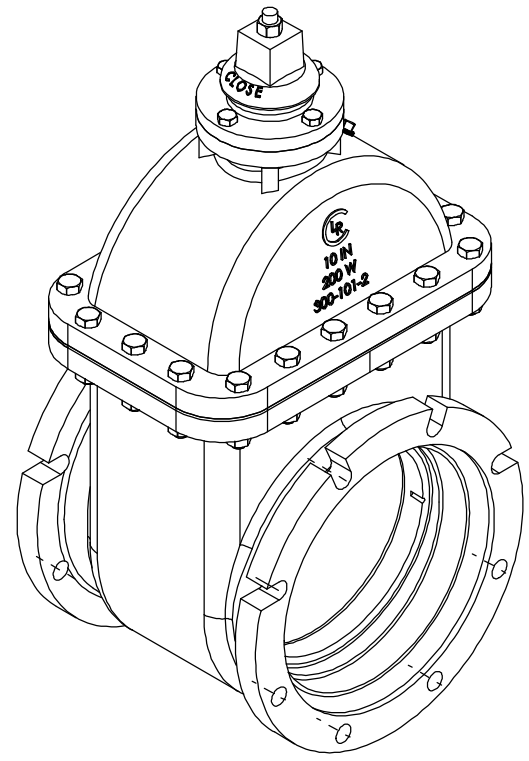
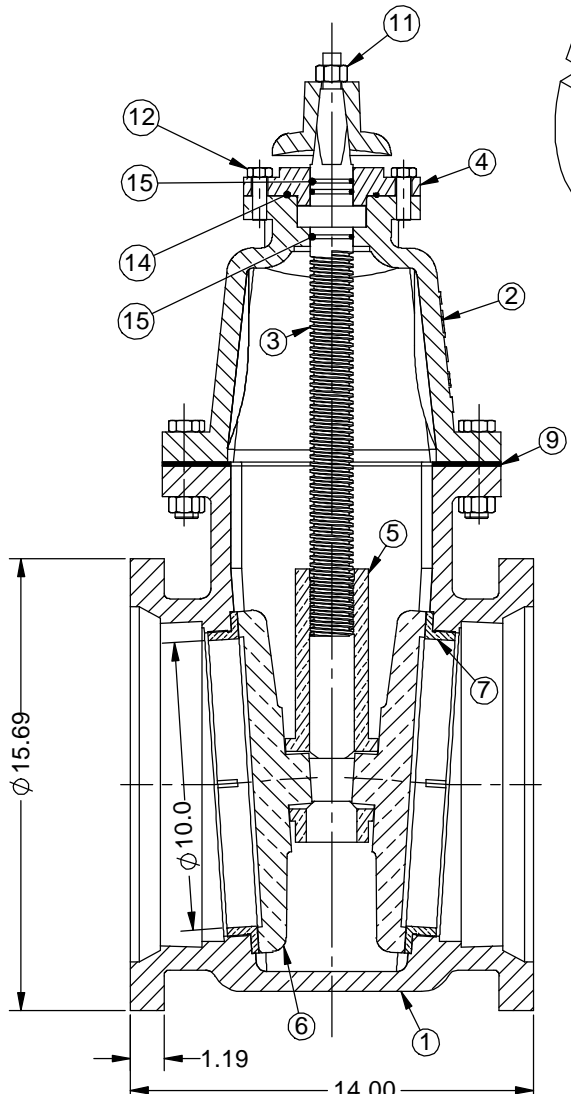
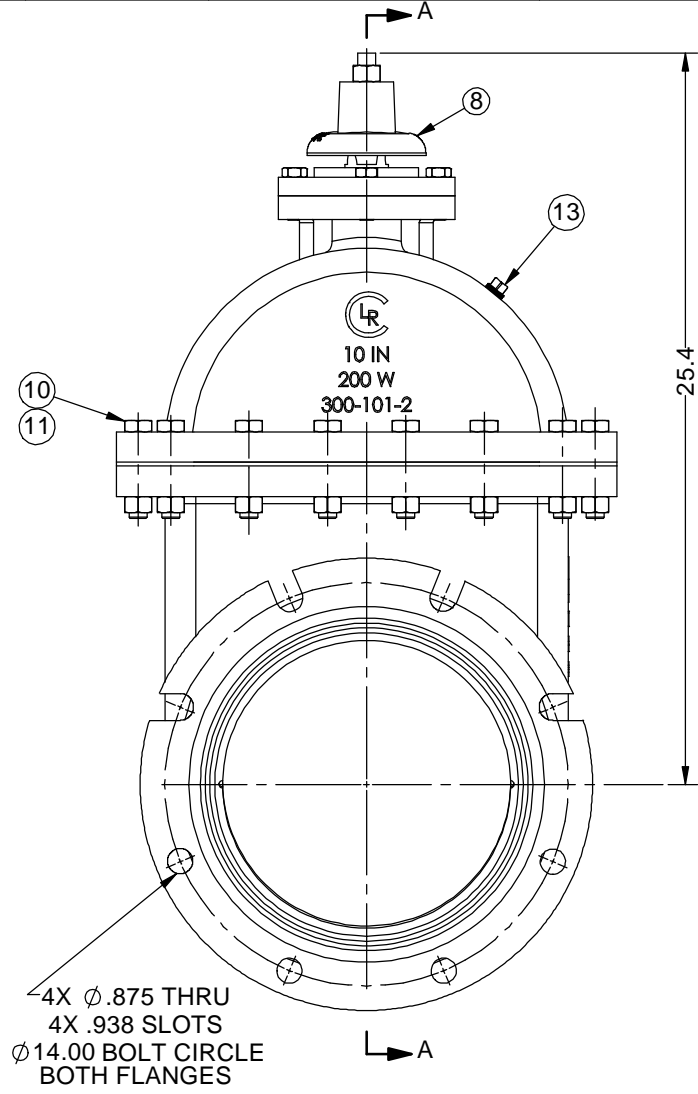


PARTS LIST				
KEY	PART No.	DESCRIPTION	MATERIAL	QTY.
1	300-101-1MJ	BODY	D.I. A536 Gr. 65-45-12	1
2	300-101-2	BONNET	D.I., A536 Gr. 65-45-12	1
3	300-10-4-SCW	STEM	AISI 304 SS	1
4	300-12-5	BONNET CAP	D.I., A536 Gr. 65-45-12	1
5	300-10-6-SCW	WEDGE	AL BRZ, B148-954	1
6	300-10-8	DISC	AL BRZ, B148-954	2
7	300-10-9	SEAT	AL BRZ, B505-C95400	2
8	300-12-10-SCW	WRENCH NUT	A536 Gr. 65-45-12	1
9	300-10-11	BONNET GASKET	GARLOCK STYLE 19 CLOTH INSERTED RUBBER	1
10	HHCS.625-11X3	HHCS, 5/8-11 UNC x 3.0" LG.	304 SS	18
11	FHN.625-11	STD HEX HD NUT, 5/8"-11 UNC	AISI 304	19
12	HHCS.5-13X1.5	HHCS, 1/2-13 UNC x 1.5" LG	304 SS	4
13	PLG.375	PIPE PLUG, HEX HEAD, 3/8" NPTF	316SS	1
14	AS568A-234	O-RING SIZE -234	BUNA N DUROMETER 70	1
15	AS568A-218	O-RING SIZE -218	BUNA N DUROMETER 70	3



DRAWN			NAME	DATE	Ludlow-Rensselaer Gate Valves by Crispin Valves
CHECKED			BBG	04/26/17	
DIMENSIONS ARE IN INCHES DO NOT SCALE DRAWING					10" CL. 150 MECH. JOINT, GV300 GATE VALVE, w/ 2" SQ. NUT, CLOSE CLOCKWISE
FILE LOCATION: \\s2\data\k\k\...			SIZE	DWG. NO.	REV
FILE NAME: 9100745r			C	9100745	0
SCALE: 0.3:1			WT: 392 LB	SHEET 1 OF 1	

REVISIONS			
REV	DESCRIPTION	DATE	APP'D