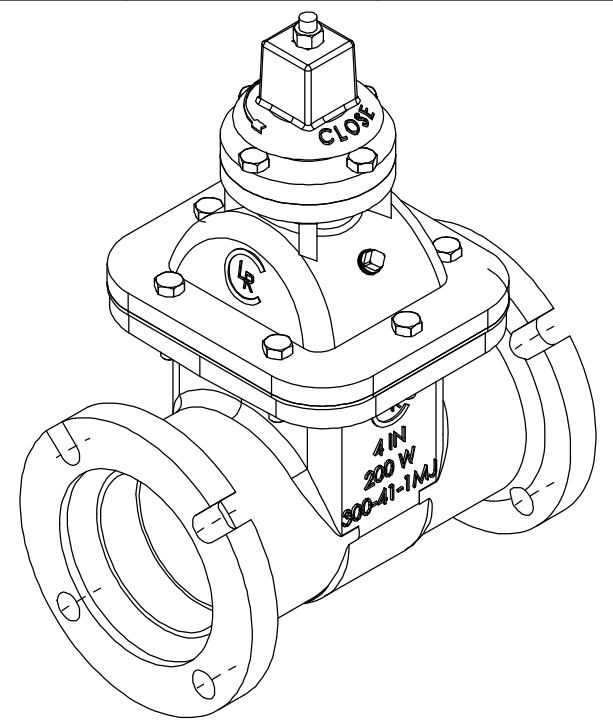
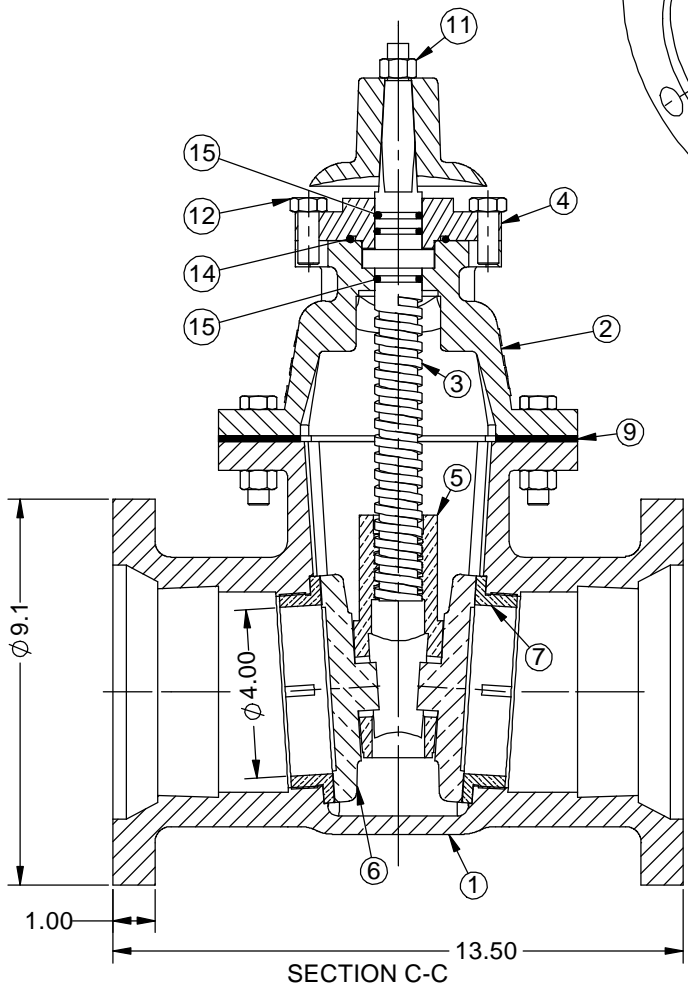
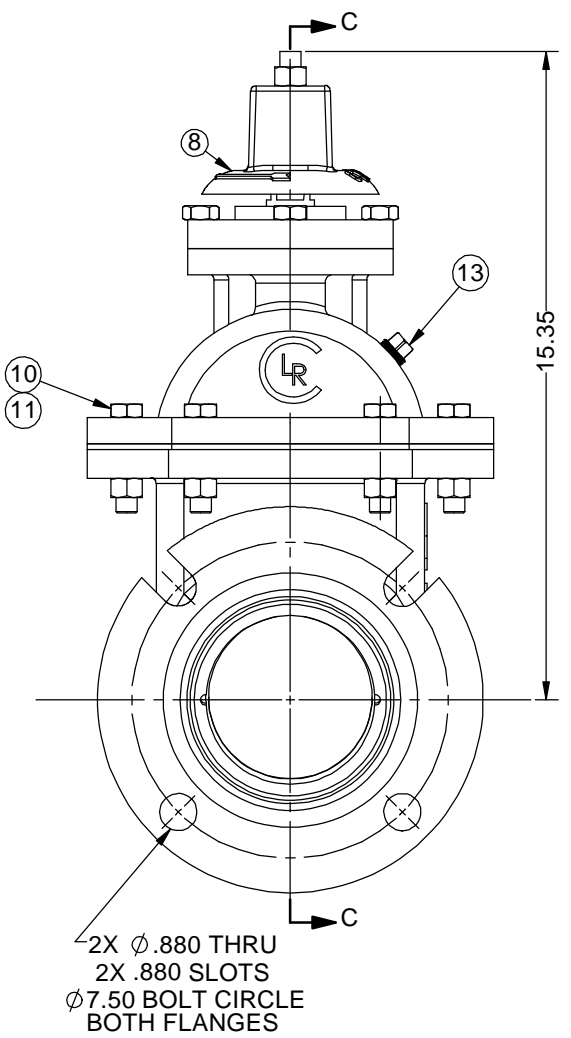


PARTS LIST				
KEY	PART No.	DESCRIPTION	MATERIAL	QTY
1	300-41-1MJ	BODY	D.I., A536 Gr. 65-45-12	1
2	300-41-2	BONNET	D.I., A536 Gr. 65-45-12	1
3	300-4-4-SCW	STEM	A276 TYPE 304 SS	1
4	300-4-5	BONNET CAP	D.I., A536 Gr. 65-45-12	1
5	300-4-6-SCW	WEDGE	AL BRZ, B148-954	1
6	300-4-8	DISC	AL BRZ, B148-954	2
7	300-4-9	SEAT	AL BRZ, B505-C95400	2
8	300-4-10-SCW	WRENCH NUT	D.I., A536 Gr. 65-45-12	1
9	GV-4-11	BONNET GASKET	GARLOCK STYLE 19	1
10	HHCS.5-13X2.25	HHCS, 1/2-13 UNC x 2.25" LG	304 SS	6
11	FHN.5-13	STD HEX HD NUT, 1/2"-13 UNC	304 SS	7
12	HHCS.5-13X1.25	HHCS, 1/2-13 UNC x 1.25" LG	304 SS	4
13	PLG.375	PLUG, HEX HEAD, 3/8" NPTF	BRONZE	1
14	AS568A-227	O-RING SIZE -227	BUNA N DUROMETER 70	1
15	AS568A-212	O-RING SIZE -212	BUNA N DUROMETER 70	3



- NOTES:
- 250 PSIG MAX. WORKING PRESSURE
 - 500 PSIG HYDROSTATIC TEST PRESSURE
 - MECHANICAL JOINT ENDS IN ACCORDANCE WITH ANSI/AWWA C111.
 - APPROXIMATE WEIGHT: 113 LBS.
 - VALVE WILL BE COATED INTERNALLY & EXTERNALLY WITH TNEC 141 EPOXY, 8-10 MILS DFT.
 - MANUFACTURED IN ACCORDANCE WITH ANSI/AWWA C500, LATEST REVISION.
 - Assy. P/N: LR0461123111129J0CF

Ludlow-Rensselaer Gate Valves by Crispin Valves			
DRAWN	NAME	DATE	
CHECKED	hWig	05/11/17	
DIMENSIONS ARE IN INCHES DO NOT SCALE DRAWING			4" Fig. 300 AWWA C111 MJ Gate Valve, w/ 2" Sq. Nut, Close Clockwise
FILE LOCATION: N:\GateValve\300\	SIZE	DWG. NO.	REV
	C	9100753	0
SCALE: 0.44:1	WT: 112 LB	SHEET 1 OF 1	

REVISIONS			
REVI	DESCRIPTION	DATE	APP'D