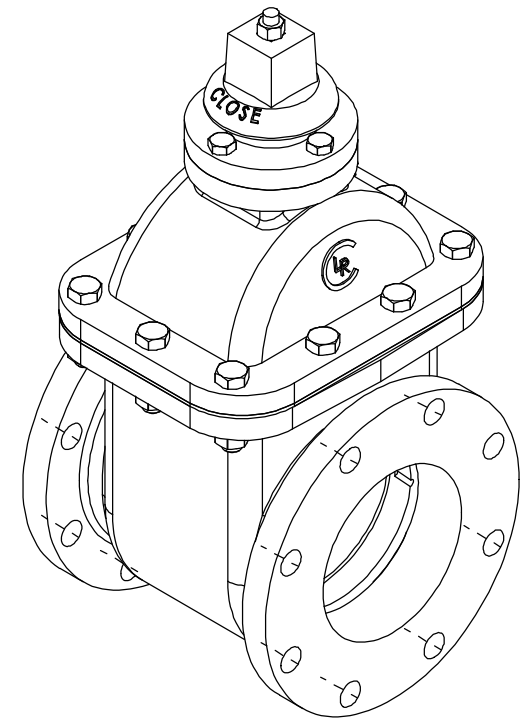
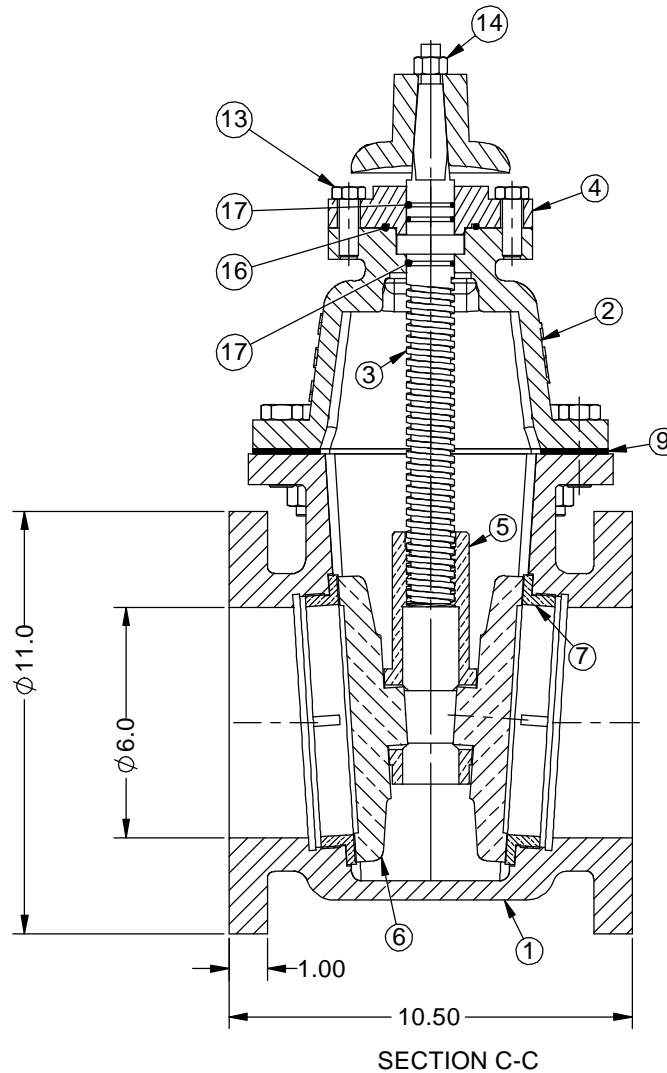
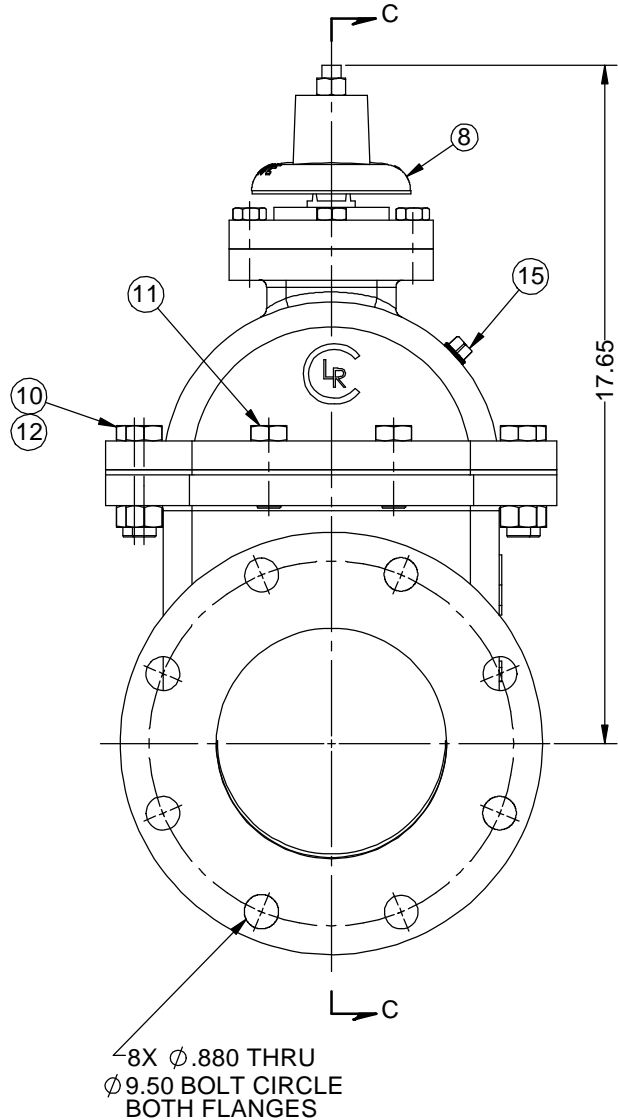


KEY	PART No.	DESCRIPTION	MATERIAL	QTY.
1	300-61-1F	BODY	D.I. A536 Gr. 65-45-12	1
2	300-61-2	BONNET	D.I. A536 Gr. 65-45-12	1
3	300-6-4-SCW	STEM	AISI 304 SS	1
4	300-6-5	BONNET CAP	D.I. A536 Gr. 65-45-12	1
5	300-6-6-SCW	WEDGE, CLOSE CLOCKWISE	AL BRZ, B148-954	1
6	300-6-8	DISC	AL BRZ, B148-954	2
7	300-6-9	SEAT	AL BRZ, B505-C95400	2
8	300-6-10-SCW	WRENCH NUT	D.I. A536 Gr. 65-45-12	1
9	300-6-11	BONNET GASKET	GARLOCK STYLE 19	1
10	HHCS.625-11X2.5	HHCS. 5/8-11 UNC x 2.5" LG.	304 SS	6
11	HHCS.625-11X1.75	HHCS. 5/8-11 UNC x 1.75" LG.	304 SS	4
12	FHN.625-11	STD HEX HD NUT, 5/8"-11 UNC	304 SS	6
13	HHCS.5-13X1.5	HHCS. 1/2-13 UNC x 1.5" LG.	304 SS	4
14	FHN.5-13	STD HEX HD NUT, 1/2"-13 UNC	304 SS	1
15	PLG.375	PLUG, HEX HEAD, 3/8" NPTF	BRONZE	1
16	AS568A-228	O-RING SIZE -228	BUNA N DUROMETER 70	1
17	AS568A-121	O-RING SIZE -121	BUNA N DUROMETER 70	3



- NOTES:
- 250 PSIG MAX. WORKING PRESSURE
 - 500 PSIG HYDROSTATIC TEST PRESSURE
 - ANSI B16.42 FLAT FACE FLANGED ENDS.
 - APPROXIMATE WEIGHT: 162 LBS.
 - VALVE WILL BE COATED INTERNALLY & EXTERNALLY WITH TNEDEC 141 EPOXY, 8-10 MILS DFT.
 - MANUFACTURED IN ACCORDANCE WITH ANSI/AWWA C500, LATEST REVISION.
 - p/n: LR0662123111149J0CF

REVISIONS			
REV	DESCRIPTION	DATE	APP'D

DRAWN	NAME	DATE	Ludlow-Rensselaer Gate Valves by Crispin Valves		
	hWig	05/15/17	6" CL. 150 FF, Fig. 300 Gate Valve, w/ 2" Sq. Nut, Close Clockwise		
CHECKED BBG 05/15/17			SIZE	DWG. NO.	REV
DO NOT SCALE DRAWING			C	9100754	0
FILE LOCATION: N:\GateValve\300\			SCALE: 0.4:1	WT: 162 LB	SHEET 1 OF 1