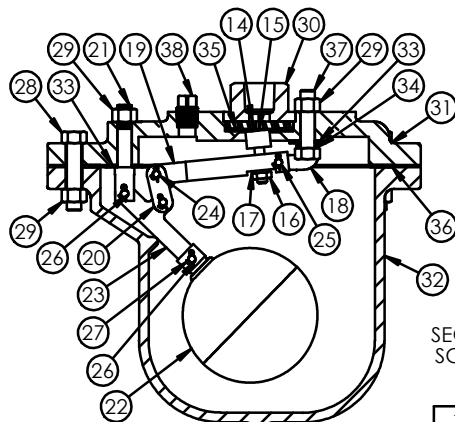


- NOTES:
1. INLET SIZE: 8" CLASS 125
OUTLET SIZE: 8 NPT
 2. APPROXIMATE WEIGHT: 293 lbs
 3. VALVE WILL BE COATED EXTERNALLY WITH PHENOLIC ALKYD PRIMER

FLANGE DATA	
FLANGE DIAMETER	13.50 in.
FLANGE THICKNESS	1.12 in.
BOLT CIRCLE DIAMETER	11.75 in.
NUMBER OF BOLT HOLES	8
BOLT HOLE DIAMETER	0.88 in.

ORIFICE DATA	
DIAMETER	MAXIMUM WORKING PRESSURE
5/16	100 PSIG
1/4	150 PSIG
3/16	200 PSIG
5/32	250 PSIG
1/8	300 PSIG



SECTION A-A
SCALE: .31:1

REV.	DESCRIPTION	DATE	APPROVED
1	REDRAWN IN SOLIDWORKS	10-28-19	

PROPRIETARY AND CONFIDENTIAL
THE INFORMATION CONTAINED IN THIS DRAWING IS THE SOLE PROPERTY OF CRISPIN VALVE. ANY REPRODUCTION IN PART OR AS A WHOLE WITHOUT THE WRITTEN PERMISSION OF CRISPIN VALVE IS PROHIBITED.

DO NOT SCALE DRAWING

AIR / VACUUM UNIT PARTS LIST

ITEM NO.	PART NUMBER	DESCRIPTION	MATERIAL	QTY.
1	80-1S	TOP	CAST IRON	1
2	80-2H	COVER FLANGE	CAST IRON	1
3	80-3-C	BODY	CAST IRON	1
4	80-4	COVER GASKET	ARMSTRONG	1
5	80-5	SEAT	BUNA-N RUBBER	1
6	80-6	FLOAT	STAINLESS STEEL	1
7	HHCS.5X1.5	TOP BOLT	STEEL	12
8	HHCS.75X3.25	COVER BOLT	STEEL	10
9	FHN.75-10	COVER NUT	STEEL	12
10	HHCS.75X3.5	LUG BOLT	STEEL	2
11	80-55	LIFTING LUG	STEEL	2
12	PLG.5	BODY PLUG	BRASS	1

PRESSURE UNIT PARTS LIST

14	13-1N	PRESSURE SEAT	PVC	1
15	13-4N	VALVE PLUNGER	BUNA-N & S/S	1
16	JFHN.25-28	PLUNGER NUT	STAINLESS STEEL	1
17	LW.25	LOCK WASHER	STAINLESS STEEL	1
18	13-5R	VALVE FULCRUM	STAINLESS STEEL	1
19	26-6S	VALVE LEVER	STAINLESS STEEL	1
20	13-7R	LINK	STAINLESS STEEL	2
21	13-8R	FLOAT FULCRUM	STAINLESS STEEL	1
22	26-9R	FLOAT	STAINLESS STEEL	1
23	26-8R	FLOAT LEVER	STAINLESS STEEL	1
24	13-11R	BEARING PIN	STAINLESS STEEL	2
25	13-12R	BEARING PIN	STAINLESS STEEL	1
26	13-11AR	BEARING PIN	STAINLESS STEEL	2
27	18-7A	COTTER PIN	STAINLESS STEEL	5
28	HHCS.375X1.75	COVER BOLT	STEEL	7
29	FHN.38-16	NUT	STEEL	9
30	1-1S	TOP	CAST IRON	1
31	13-20	COVER FLANGE	CAST IRON	1
32	21-1C	BODY	CAST IRON	1
33	13-22	FULCRUM WASHER	FIBER	2
34	13-26	FULCRUM WASHER	FIBER	1
35	13-23	SEAT GASKET	BUNA-N RUBBER	1
36	13-24	COVER GASKET	ARMSTRONG	1
37	HHCS.375X1.5	FULCRUM BOLT	STAINLESS STEEL	1
38	27-29	FLANGE PLUG	BRASS	1

CONNECTING PARTS LIST

40	21-24	MATING GASKET	ARMSTRONG	1
41	HHCS.5X1.25	MATING BOLT	STEEL	4

UNLESS OTHERWISE SPECIFIED: DIMENSIONS ARE IN INCHES			NAME	DATE
XX DIMENSIONS	±.1		DJF	10-28-19
XXX DIMENSIONS	±.01			
XXXX DIMENSIONS	±.005			
DRILLED HOLES	±.01		CHECKED	-
ANGLES	±.1		ENG APPR.	-
CONCENTRIC DIAMETERS	SEE BELOW		MFG APPR.	-
MACHINED TO CAST	.02 TIR		Q.A.	-
MACHINED SURFACES	125 RMS			
BEFORE FINISH				
BREAK SHARP EDGES				
MATERIAL:		FILE LOCATION:	\S2s1\Drawings\ASSEMBLY.CAV\	
FINISH:		FILE NAME:	C81 8239065.r1	

CRISPIN VALVES

TITLE:
8" CLASS 125,
COMBINATION AIR
RELEASE VALVE

SIZE	DWG. NO.	REV
B	C81 8239065	1
SCALE: 0.28:1	WT: LB	SHEET 1 OF 1