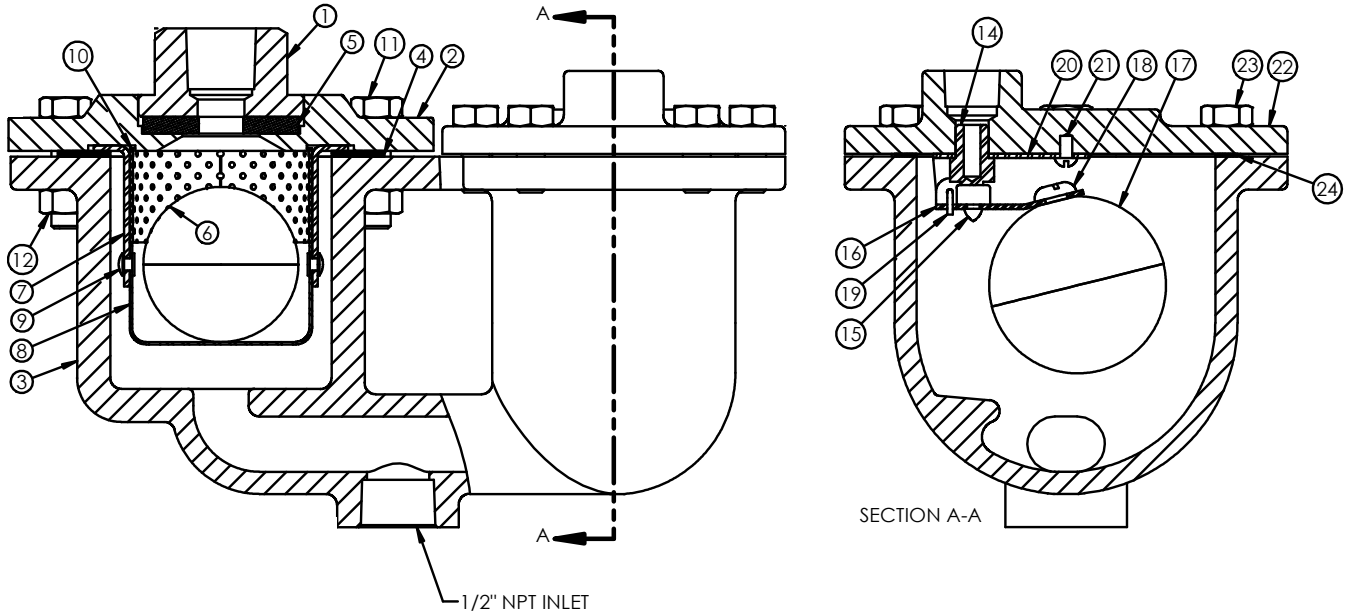


C Series, Combination Air Release Valves, Sizes 1/2"-24", AWWA C512

C Series Combination Air Release Valve, Size 1/2"



C SERIES, 1/2" SIZE MATERIALS LIST

Air & Vacuum Unit		
ITEM	DESC.	MATERIAL
1	TOP	Cast Iron
2	COVER FLANGE	Cast Iron
3	COMBO BODY	Cast Iron
4	COVER GASKET	Armstrong
5	SEAT	Buna-N-Rubber
6	FLOAT	Stainless Steel
7	HANGER	Stainless Steel
8	FLOAT CUP	Stainless Steel
9	RIVET	Stainless Steel
10	DIFFUSER	Stainless Steel
11	COVER BOLT	Steel
12	COVER NUT	Steel

Pressure Air Release Unit		
ITEM	DESC.	MATERIAL
14	PRESSURE SEAT	Stainless Steel
15	VALVE BUTTON	Viton
16	VALVE LEVER	Stainless Steel
17	FLOAT	Stainless Steel
18	FLOAT SCREW	Stainless Steel
19	HINGE PIN	Stainless Steel
20	HINGE BUTT	Stainless Steel
21	DRIVE SCREW	Stainless Steel
22	COVER FLANGE	Cast Iron
23	COVER BOLT	Steel
24	COVER GASKET	Armstrong

C Series, 1/2" Size Specifications

ALL DIMENSIONS ARE IN INCHES. CERTIFIED DIMENSIONS ALSO AVAILABLE.

Model	Inlet Size	Outlet Size	Overall Width	Overall Height	Weight (lbs)
C5	1/2 NPT	1/2 NPT	8.75	5.64	13



PRODUCT LINE C Series Combo. Air Release Valves, 1/2"-24	DATE 8/30/2023	REVISION 0
SHEET C Series Materials List, size 1/2"	DOC. NO. D-AV-C-.5-ML-r0	