

# FV Series Foot Valves

---

Foot Valve: Sizes 3" thru 36" available



**Crispin**  
Since 1905

---

Crispin Multiplex Manufacturing Co. • 600 Fowler Avenue • Berwick, PA 18603 • 1-800-247-VALV  
T: (570) 752-4524 • F: (570) 752-4962 • [www.crispinvalve.com](http://www.crispinvalve.com) • [info@crispinvalve.com](mailto:info@crispinvalve.com)



# FV SERIES

## Foot Valves

# Crispin Foot Valves

Valve Function
<ul style="list-style-type: none"> <li>Maintains pump prime upon pump outage</li> </ul>
Features
<ul style="list-style-type: none"> <li>Resilient seat provides positive shut off</li> <li>Full flow area</li> <li>Stainless steel inlet screen</li> <li>Rugged construction for long life</li> <li>Available in sizes 2" to 36"</li> </ul>

**I**nstalled on the pump suction, CRISPIN Foot Valves prevent the pump column from draining upon pump shutdown. Silent during operation and normally closed, the valve has a center guided disc with a Buna-N seat to provide a tight drip seal.

The minimum flow area, which is perpendicular to the direction of flow thru the valve, is equal to the pipe area. The inlet is fitted with a stainless steel screen over its opening to provide 3 to 4 times the area of the pipe.

### Standard and Optional Materials

NAME	MATERIAL
BODY	Ductile Iron
SEAT	316 Stainless Steel
DISC	316 Stainless Steel
SCREEN	Stainless Steel
SCREEN RETAINING SCREWS	316 Stainless Steel
FLANGE	Ductile Iron
BOLTS & NUTS	Stainless Steel

### ANSI Class 125 Flanged Valves

MODEL	INLET SIZE	INLET CLASS	VALVE HEIGHT	O.D.	WEIGHT (LBS)
FV31	3"	150	9 1/4"	8"	35
FV41	4"	150	10 1/2"	9 1/2"	47
FV61	6"	150	16"	11 1/2"	100
FV81	8"	150	20 3/4"	14"	166
FV101	10"	150	25 3/4"	16 1/2"	276
FV121	12"	150	26 3/4"	19 1/2"	396
FV141	14"	150	29"	21 1/2"	465
FV161	16"	150	32 3/4"	23 1/2"	605
FV181	18"	150	28"	25"	725
FV201	20"	150	35"	31"	1059
FV241	24"	150	38 1/4"	37"	1600

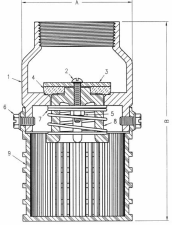
*\*For 26" thru 36" dimensions, please consult the factory.*



# Submittal Sheet for Crispin FV Series

## 2"-4" Threaded Foot Valve

Date: 2016



### Specifications

Foot Valve(s) shall be installed on the pump suction to prevent the pump column from draining upon pump shutdown.

The valve(s) shall be silent operating and normally closed. A center guided disc with a Buna-N seat shall provide a drip tight seal. Minimum flow area perpendicular to the direction of flow thru the valve shall be equal to the pipe area. The inlet shall be fitted with a polypropylene screen with a clear opening adequate to provide 3 to 4 times the area of the pipe.

2"-4" threaded: The valve(s) materials of construction shall include a cast iron body, stainless steel spring, Delrin and stainless steel poppet, Nitrile seat, and polypropylene strainer. The pipe connection shall be \_\_\_\_\_" NPT.

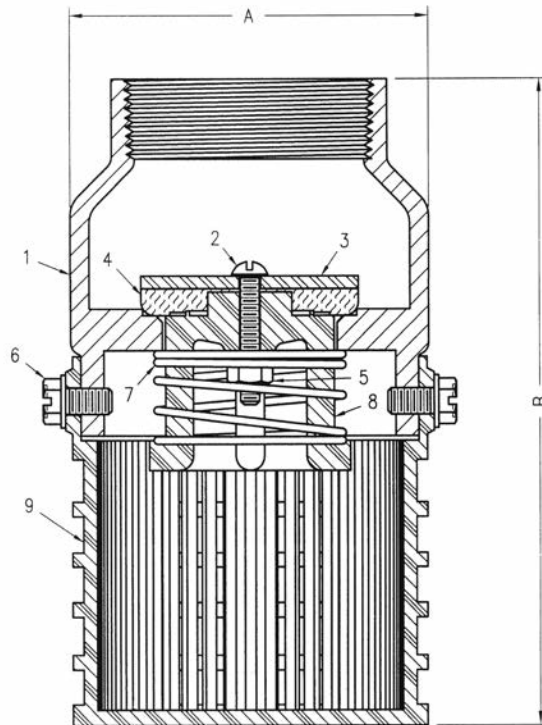
The valve(s) shall be model \_\_\_\_\_ as manufactured by Crispin-Multiplex Manufacturing Co., Berwick, Pennsylvania.

### Valve Parts List

ITEM	DESCRIPTION	MATERIAL	ASTM
1	BODY	CAST IRON	A126 CL.B
2	BOLT	STAINLESS STEEL	A193
3	DISC	STAINLESS STEEL	A240
4	SEAL	NITRILE	D2000
5	NUT	STAINLESS STEEL	A194
6	BOLT	STAINLESS STEEL	A193
7	SPRING	STAINLESS STEEL	A313
8	POPPET	DELIN	N/A
9	STRAINER	POLYPROPYLENE	N/A

### Size Specifications

MODEL	INLET SIZE	OUTLET SIZE	A	B	WGHT.
FV20	2" NPT	2" NPT	3.50	6.25	3
FV30	3" NPT	3" NPT	5.50	9.25	8
FV40	4" NPT	4" NPT	6.75	11.25	15



SUBMITTAL SHEET FOR FV SERIES



# Submittal Sheet for Crispin FV Series

## 3"-4" Flanged Foot Valve

Drawing Date: 2016

SUBMITTAL SHEET FOR FV SERIES

### Valve Parts List

ITEM	DESCRIPTION	MATERIAL	ASTM
1	BODY	DUCTILE IRON	A536
2R	RESILIENT SEAT	STAINLESS STEEL/BUNA-N RUBBER	T316/D2000
3	DISC	STAINLESS STEEL	T316
5	BUSHING	STAINLESS STEEL	T316
6	SCREW	STAINLESS STEEL	A193
8	RETAINING RING	STAINLESS STEEL	A240
9	MOUNTING FLANGE	DUCTILE IRON	A536
11	BOLT	STAINLESS STEEL	A193
12	NUT	STAINLESS STEEL	A194
14	SCREEN	STAINLESS STEEL	A240
24	GASKET	ARMSTRONG N-8092	N/A
50	SCREEN RETAINING SCREW	STAINLESS STEEL	A193

### Specifications

Foot Valve(s) shall be installed on the pump suction to prevent the pump column from draining upon pump shutdown.

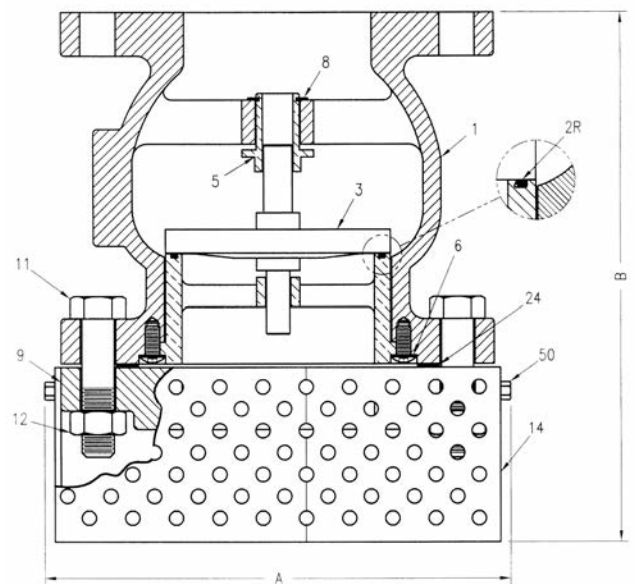
The valve(s) shall be silent operating and normally closed. A center guided disc with a Buna-N seat shall provide a drip tight seal. Minimum flow area perpendicular to the direction of flow thru the valve shall be equal to the pipe area. The inlet shall be fitted with a stainless steel screen with a clear opening adequate to provide 3 to 4 times the area of the pipe.

3"-16" flanged: The valve(s) materials of construction shall include a ductile iron body, stainless steel disc, bushing and seat ring with a Buna-N seal; and stainless steel inlet screen. The flanged pipe connection shall be ANSI Class 150.

The valve(s) shall be model \_\_\_\_\_ as manufactured by Crispin-Multiplex Manufacturing Co., Berwick, Pennsylvania.

### Size Specifications

MODEL	INLET SIZE	OUTLET SIZE	A	B	WGHT.
FV31	3" 150# FLG	3" 150# FLG	8.00	9.25	35
FV41	4" 150# FLG	4" 150# FLG	9.50	10.50	53



# Submittal Sheet for Crispin FV Series



## 6"-16" Class 150 Foot Valve

Date: 2016

### Specifications

Foot Valve(s) shall be installed on the pump suction to prevent the pump column from draining upon pump shutdown.

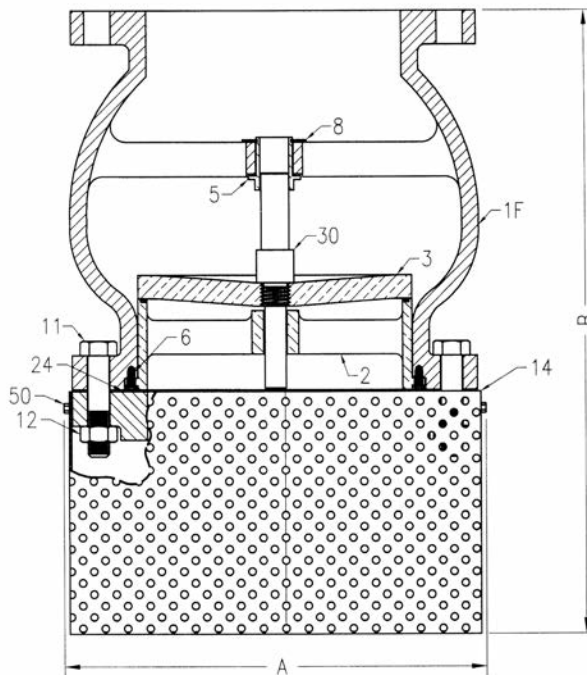
The valve(s) shall be silent operating and normally closed. A center guided disc with a Buna-N seat shall provide a drip tight seal. Minimum flow area perpendicular to the direction of flow thru the valve shall be equal to the pipe area. The inlet shall be fitted with a stainless steel screen with a clear opening adequate to provide 3 to 4 times the area of the pipe.

3"-16" flanged: The valve(s) materials of construction shall include a ductile iron body, stainless steel disc, bushing and seat ring with a Buna-N seal; and stainless steel inlet screen. The flanged pipe connection shall be ANSI Class 150.

The valve(s) shall be model \_\_\_\_\_ as manufactured by Crispin-Multiplex Manufacturing Co., Berwick, Pennsylvania.

### Size Specifications

MODEL	INLET SIZE	OUTLET SIZE	A	B	WGHT.
FV61	6" 150# FLG	6" 150# FLG	11.50	16.00	100
FV81	8" 150# FLG	8" 150# FLG	14.00	20.75	166
FV101	10" 150# FLG	10" 150# FLG	16.50	25.75	276
FV121	12" 150# FLG	12" 150# FLG	19.50	26.75	396
FV141	14" 150# FLG	14" 150# FLG	21.50	29.00	465
FV161	16" 150# FLG	16" 150# FLG	23.50	32.75	605



### Valve Parts List

ITEM	DESCRIPTION	MATERIAL	ASTM
1	BODY	DUCTILE IRON	A536
2	RESILIENT SEAT	STAINLESS STEEL/BUNA-N RUBBER	B62/D2000
3	DISC	STAINLESS STEEL	T316
5	BUSHING	STAINLESS STEEL	T316
6	SCREW	STAINLESS STEEL	A193
8	RETAINING RING	STAINLESS STEEL	A240
9	MOUNTING FLANGE	DUCTILE IRON	A536
11	BOLT	ZINC PLATED	A193
12	NUT	ZINC PLATED	A194
14	SCREEN	STAINLESS STEEL	A240
24	GASKET	ARMSTRONG N-8092	N/A
30	SHAFT	STAINLESS STEEL	T316
50	SCREEN RETAINING SCREW	STAINLESS STEEL	A193

SUBMITTAL SHEET FOR FV SERIES





# Submittal Sheet for Crispin FV Series

## 18"-24" Flanged Foot Valve

Drawing Date: 2016

SUBMITTAL SHEET FOR FV SERIES

### Valve Parts List

ITEM	DESCRIPTION	MATERIAL	ASTM
1	BODY	DUCTILE IRON	A536
2	RESILIENT SEAT	STAINLESS STEEL/BUNA-N RUBBER	T316/D2000
3	DISC	STAINLESS STEEL	T316
5	BUSHING	STAINLESS STEEL	T316
6	SCREW	STAINLESS STEEL	A193
8	RETAINING RING	STAINLESS STEEL	A240
9	MOUNTING FLANGE	DUCTILE IRON	A536
11	BOLT	CAD. PLATED STEEL	A193
12	NUT	CAD. PLATED STEEL	A194
14	SCREEN	STAINLESS STEEL	A240
24	GASKET	ARMSTRONG N-8092	N/A
30	SHAFT	STAINLESS STEEL	T316
30A	SHAFT	STAINLESS STEEL	T316
31	NUT	STAINLESS STEEL	194
50	SCREEN RETAINING SCREW	STAINLESS STEEL	A193

### Specifications

Foot Valve(s) shall be installed on the pump suction to prevent the pump column from draining upon pump shutdown. The valve(s) shall be silent operating and normally closed. A center guided disc with a Buna-N seat shall provide a drip tight seal. Minimum flow area perpendicular to the direction of flow thru the valve shall be equal to the pipe area. The inlet shall be fitted with a stainless steel screen with a clear opening adequate to provide 3 to 4 times the area of the pipe.

18"-24" flanged: The valve(s) materials of construction shall include a ductile iron body, stainless steel disc, bushing and seat ring with a Buna-N seal; and stainless steel inlet screen. The flanged pipe connection shall be ANSI Class 150.

The valve(s) shall be model \_\_\_\_\_ as manufactured by Crispin-Multiplex Manufacturing Co., Berwick, PA.

### Size Specifications

MODEL	INLET SIZE	OUTLET SIZE	A	B	WGHT.
FV181	18" 150# FLG	18" 150# FLG	25.00	28.00	725
FV201	20" 150# FLG	20" 150# FLG	31.00	35.00	1059
FV241	24" 150# FLG	24" 150# FLG	37.00	38.28	1600

