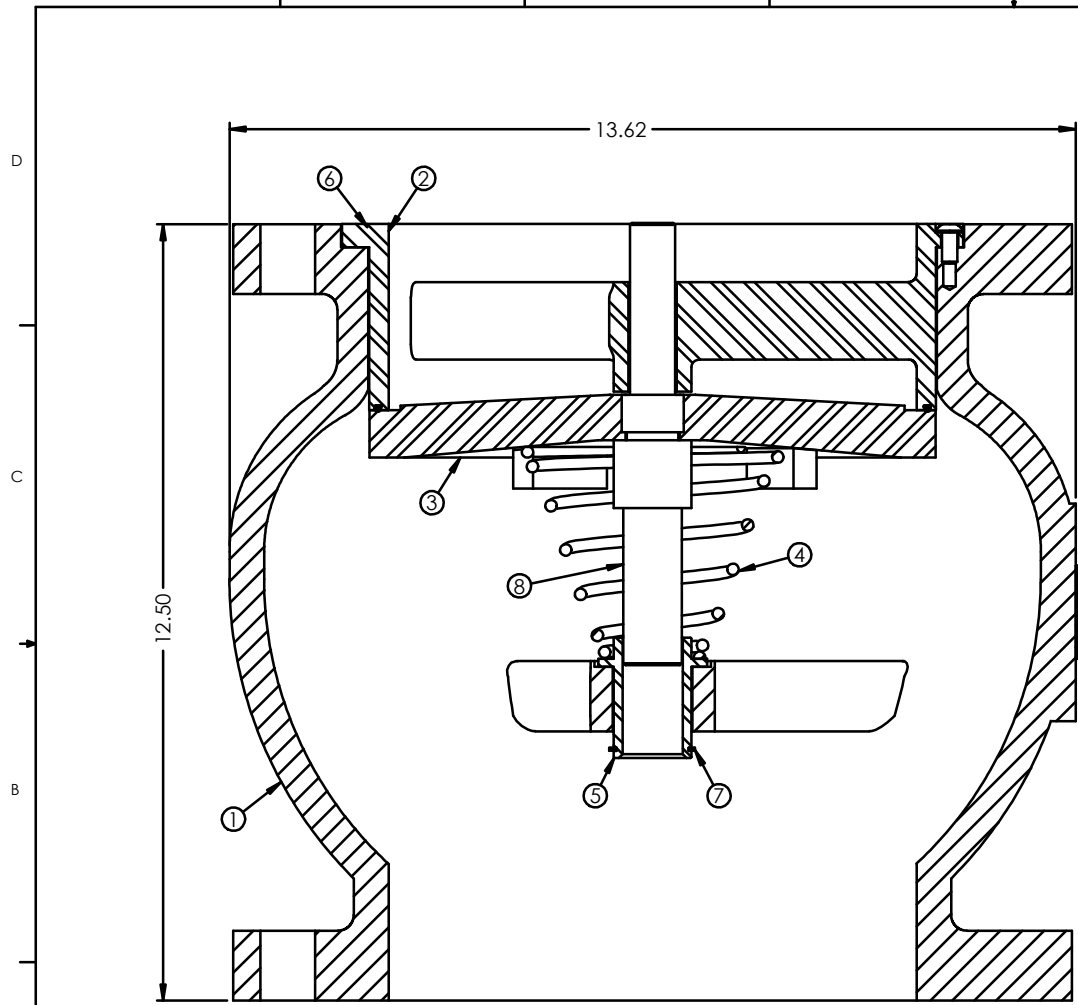


8 7 6 5 4 3 2 1



PARTS LIST				
ITEM NO.	PART NUMBER	DESCRIPTION	MATERIAL	QTY.
1	808-1F	BODY	DUCTILE IRON	1
2	808-2R	RESILIENT SEAT RING	BUNA-N & AL-BRZ	1
3	808-3	DISC	AL-BRONZE	1
4	808-4	SPRING	STAINLESS STEEL	1
5	808-5	BUSHING	AL-BRONZE	1
6	BHCS.25X.50	SCREW	STAINLESS STEEL	2
7	808-8	EXTERNAL RETAINING	STAINLESS STEEL	1
8	808-30	SHAFT	AL-BRONZE	1

FLANGE DATA	
FLANGE DIAMETER	13.50 in.
FLANGE THICKNESS	1.12 in.
BOLT CIRCLE DIAMETER	11.75 in.
NUMBER OF BOLT HOLES	8
BOLT HOLE DIAMETER	0.88 in.

- NOTES:**
- INLET SIZE: 8" CL. 150 FLANGED  
OUTLET SIZE: 8" CL. 150 FLANGED
  - APPROXIMATE WEIGHT: 126 lbs
  - VALVE WILL BE COATED EXTERNALLY WITH PHENOLIC ALKYD PRIMER

REV.	DESCRIPTION	DATE	APPROVED
1	REDRAWN IN SOLIDWORKS	9-22-21	BJL

REVISIONS		
REV.	DESCRIPTION	DATE
1	REDRAWN IN SOLIDWORKS	9-22-21

**CRISPIN VALVES**

TITLE: 8" CL. 150 RESILIENT SEAT GLOBE CHECK VALVE

SIZE DWG. NO. REV  
**B** GC81.R 8280457 1

SCALE: 0.5:1 WT: LB SHEET 1 OF 1

UNLESS OTHERWISE SPECIFIED:	NAME	DATE
DIMENSIONS ARE IN INCHES	DJF	9-22-21
XX DIMENSIONS ±.1	CHECKED	-
XXX DIMENSIONS ±.01	ENG APPR.	-
XXXX DIMENSIONS ±.005	MFG APPR.	-
DRILLED HOLES ±.01	Q.A.	-
ANGLES ±.1°		
CONCENTRIC DIAMETERS SEE BELOW		
MACHINED TO CAST 005 TIR		
MACHINED SURFACES 125 BMS		
REMOVE CHAMFERS		
BREAK SHARP EDGES		
MATERIAL: PER BOM	FILE LOCATION:	\\S2\51\Drawings\ASSEMBLY\GC\
FINISH:	FILE NAME:	GC81.R 8280457.r1

PROPRIETARY AND CONFIDENTIAL  
 THE INFORMATION CONTAINED IN THIS DRAWING IS THE SOLE PROPERTY OF CRISPIN VALVE. ANY REPRODUCTION IN PART OR AS A WHOLE WITHOUT THE WRITTEN PERMISSION OF CRISPIN VALVE IS PROHIBITED.

DO NOT SCALE DRAWING

8 7 6 5 4 3 2 1