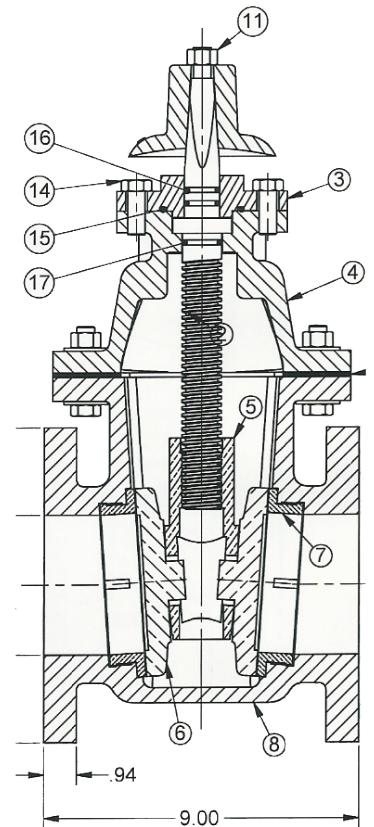
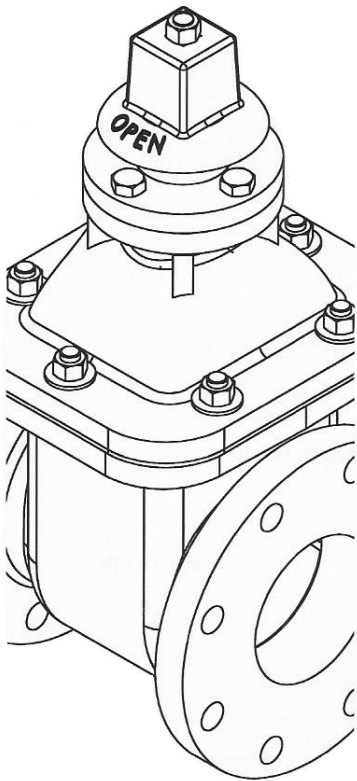




LUDLOW-RENSSELAER

AWWA C-500 DOUBLE DISC GATE VALVES Series C300



VALVES FROM 3" THRU 12"

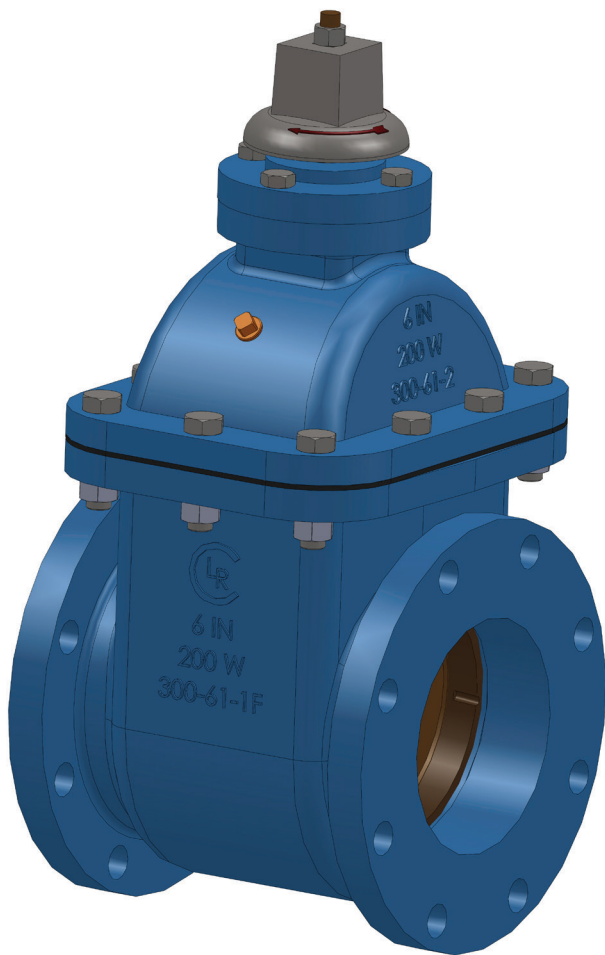


www.crispinvalve.com

LUDLOW-RENSSELAER REVOLVING DOUBLE DISC GATE VALVE SERIES 300

The Ludlow-Rensselaer revolving disc gate valve has been successfully utilized in the water and wastewater applications for many decades. Low maintenance and performance longevity makes it the most desirable metal seated gate valve in the industry. The valves are manufactured in accordance with AWWA C 500.

We use a double disc, wedging principle. Like a solid wedge metal seated gate valve, the wedge is angled with two interchangeable or reversible discs that stay aligned with the body seat rings for excellent sealing capacity. During the closing operation, the revolving discs engage the body seat rings and will rotate. This function allows the valve to self-clean the seat rings and provide a different seating location each and every time the valve is closed. The independent wedging and seating action facilitates smoother operation with less torque. Since the discs rotate, there is no fouling of the valve's body guides.



Ludlow-Rensselaer revolving disc gates may be placed in any position without concerns of misalignment during the seating process. Three quarter inch taps on the bonnet allow for air venting during testing or flushing.

Valves can be operated with either 2" operating nuts, handwheels or mounted motors.

Please consult the factory for complete dimension and configuration information and details.

MATERIALS

SIZES

14" Thru 108" in AWWA Class 125/150
(Meets AWWA C500)

BODY

Ductile Iron (ASTM A536, Grade 65-45-12)
Optional Cast Iron (ASTM A126, Class B)

STEM

ASTM A276, Grade 304 Stainless Steel

DISCS

Aluminum Bronze C954

PACKING

O-Ring - Buna-N Standard, EPDM Optional

COATING

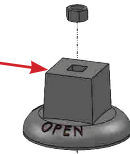
TNEMEC N141 2-Part Epoxy In/Out

BOLTS AND NUTS

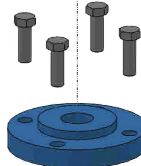
304 Stainless Steel Standard

3" - 12" LUDLOW-RENSSELAER REVOLVING METAL SEATED GATE VALVE

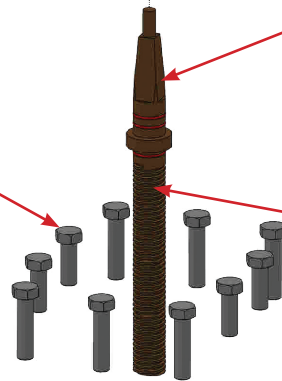
2" Operating nut (optional hand wheels available)



External stem seal designed to prevent sand or grit from working between stem and stem plate

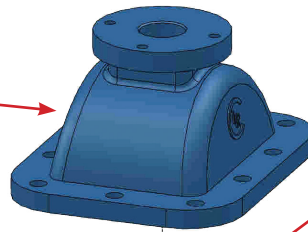


Bolts - All nuts and bolts come standard with 304 stainless steel (316 stainless steel available)



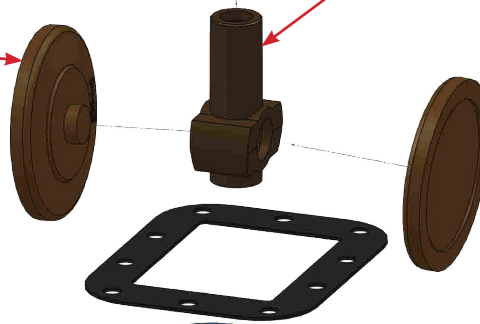
Stem provided with 304 stainless steel or aluminum bronze (with integral thrust collar and stem out)

Epoxy Coating - Two part epoxy provides outstanding corrosion resistance on all ductile surfaces inside and out per AWWA C550



Wedge and disc assembly designed with aluminum bronze for excellent performance and corrosion resistance

Revolving disc allowing for easy seat ring engagement



Body seat rings constructed with durable aluminum bronze

Full diameter waterway oversized for smooth unobstructed flow

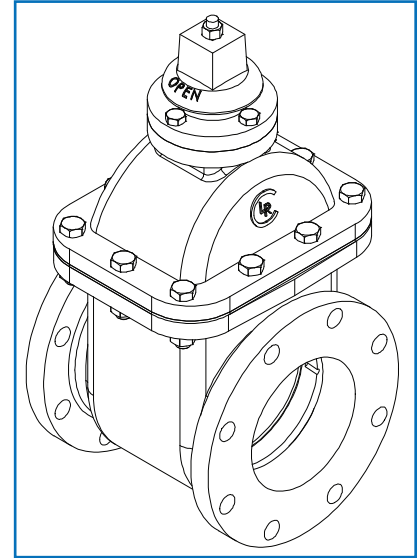
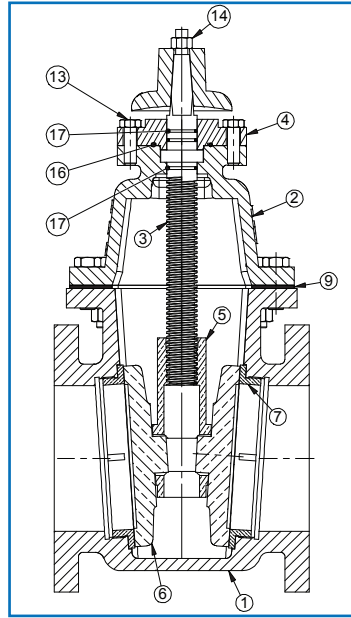
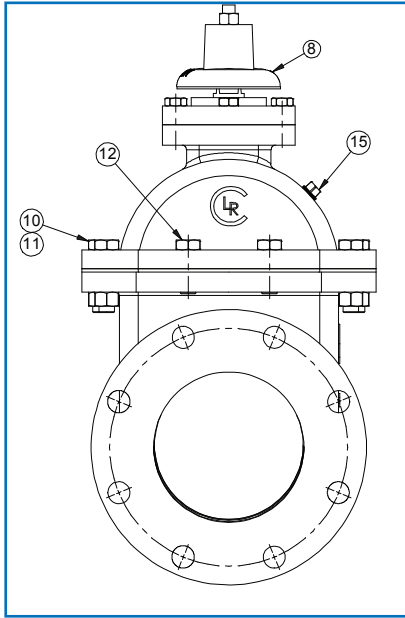
Body and bonnet ductile iron is standard with cast iron as an option



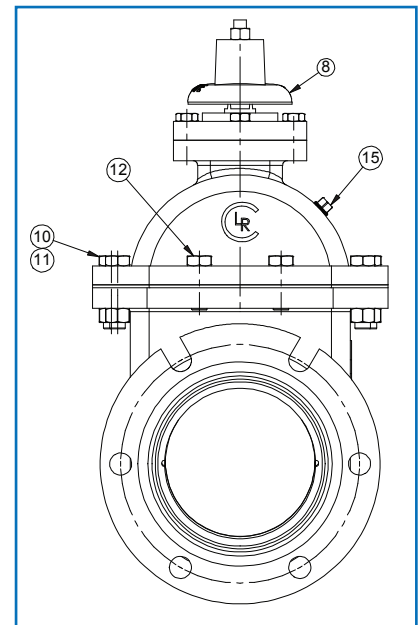
Flanged or mechanical joint, excellent adaption to applicable piping systems with lay lengths in accordance with AWWA C509



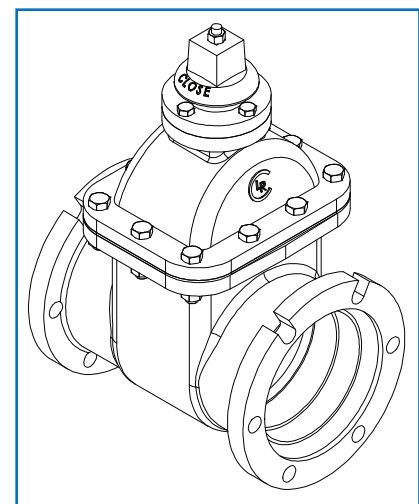
TECHNICAL DATA



SIZE	FLxFL	MJxMJ	FLxMJ
	Face to Face Dim.		
3"	8"	8.5"	8.25"
4"	9"	9.5"	9.25"
6"	10.5"	10.5"	10.5"
8"	11.5"	13.5"	12.5"
10"	13"	15.5"	14.25"
12"	14"	16"	15"



KEY	DESCRIPTION	MATERIAL
1	BODY	C.I. A126 CL. B
2	BONNET	C.I. A126 CL. B
3	STEM	B584-C090500 BRONZE
4	BONNET CAP	ASTM A36
5	WEDGE, OPEN CLOCKWISE	B584-C090500 BRONZE
6	DISC	B584-C090500 BRONZE
7	SEAT	B584-C090500 BRONZE
8	WRENCH NUT	C.I. A126 CL. B
9	BONNET GASKET	GARLOCK STYLE 19 CLOTH INSERTED RUBBER
10	HHCS, 5/8-11 UNC x 2.5" LG.	304 SS
11	HEX HD NUT, 5/8"-11 UNC	AISI 304
12	HHCS, 5/8-11 UNC x 1.75" LG.	304 SS
13	HHCS, 1/2-13 UNC x 1.5" LG	304 SS
14	STD HEX HD NUT, 1/2"-13 UNC	AISI 304
15	PIPE PLUG, HEX HEAD, 3/8" NPTF	BRONZE
16	O-RING SIZE -228	BUNA N DUROMETER 70
17	O-RING SIZE -121	BUNA N DUROMETER 70



LUDLOW-RENSSELAER

DOUBLE DISC GATE VALVE SPECIFICATIONS

STANDARD SPECIFICATION FOR AWWA C500 DOUBLE DISC GATE VALVES

Products 2.1 Double Disc Gate Valves 3" through 12" per AWWA C-500

Manufacturer: Ludlow-Rensselaer

- A. Valve shall be manufactured in accordance with AWWA C-500. Shall be flanged end Class 125 or Class 250 or mechanical joint as specified. Valves shall be designed for on/off service for applications in water and/or waste water with a operating pressure rating of 250 PSI maximum and test pressure of 500 PSI. The discs shall be of revolving type to provide self-cleaning of seat rings and allowing the discs to seat variably with each closure. For clean water service, valves shall be certified to NSF61.
- B. Materials on construction
1. Body and bonnet shall be ductile iron ASTM A 536 or cast grey iron ASTM A126.
 2. Stem shall be 304 stainless steel ASTM A 276
 3. Wedge, discs and body seat rings shall be aluminum bronze C954.
 4. Stem seal shall be with a three O-ring design, Buna-N or EPDM.
 5. Fasteners shall be 304 stainless steel ASTM A276.
 6. Flanges shall have ANSI B16.1 Class 125 or Class 250 flat faced flanges as specified.
 7. Valves shall be coated internally and externally with two part epoxy NSF61 approved.
- C. Operators
- Valves shall be operated with a 2" operating nut for below grade valves or hand wheel for above grade.

OTHER VALVE PRODUCTS

Air Valves: Clean & Sewage Water Applications

- UX Series, PX Series, AX Series – 2"x6"

Air Valves: Clean Water Applications

- Air & Vacuum – A, AL Series – ½" thru 24"
- Deep Well Air – DL Series – ½" thru 6"
- Pressure Air Release – PL Series – 1" thru 6"
- Pressure Air Release – AR Series – 1" thru 6"
- Midget Air – M Series – 3/8" thru 1"
- Universal Air Release – UL Series – 2" thru 8"
- Combination Air Release – C Series – ½" thru 24"
- Dual Air – AL/PL Series – ½" thru 24"
- Surge Check – SC Series – 3" thru 24"
- Negative Pressure – NP Series – ½" thru 4"

Air Valves: Sewage Water Applications

- Air & Vacuum – S Series – 2" thru 10"
- Pressure Air Release – SL Series – 2" thru 6"
- Universal Sewer Air Release – US Series – 2" thru 6"
- Combination Sewer – S/SL Series
- Foot Valve – FV Series – 2" thru 36"
- Vacuum Relief – VR Series – 3" thru 16"

Support Valves

- Tangential Flow Air Eliminator – AE Series – 2" thru 24"
- Thermally Activated – TAV Series – ½"
- Vacuum Priming – VPL/VSL Series – 1" thru 4"

Check Valves

- Tilting Disc Check – TD Series – 3" thru 72"

Swing Check – SWC/SWL Series – 2" thru 36"

Globe Silent Check – GC/WC Series – 2 ½" thru 36"

Rubber Flapper Check – RF Series – 2" thru 24"

K-Flo Butterfly Valves

- 500 Series – 3" thru 20"
- 47 Series – 24" thru 168"
- L2 Series – 24" thru 72"

K-Flo Plug Valves

- 800 Series – 3" thru 12"
- 900 Series – 14" thru 48"
- 700 Series – 14" thru 48"

Gate Valves

- Metal Seated Double Disc - List 11, 13A, 14 Double Disc - 14" thru 108"
- Metal Seated Double Disc – Series 300 – 3" thru 12"
- Resilient Seated – 2" thru 24"

