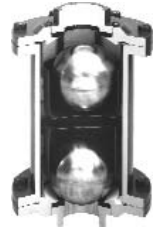


# Negative Pressure Valves



N SERIES

## Negative Pressure Valves

### Valve Function

- Valves vent air to the atmosphere

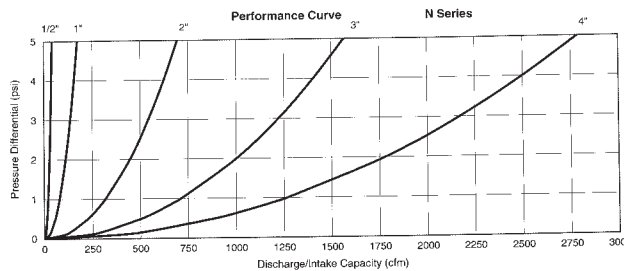
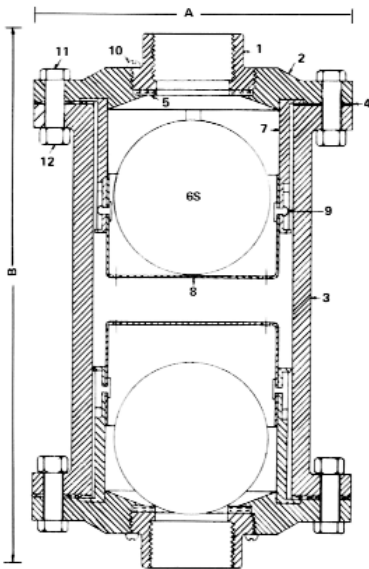
### Features Include

- Meets AWWA C-512
- Peripherally guided floats
- Available in sizes 1/2" thru 4"

The CRISPIN Negative Pressure Valve is designed to release air automatically from pipeline siphons. When the siphon is in normal operation, the two floats are in the position shown in the cutaway view. The greater the vacuum, the more tightly the lower float seats to prevent air leaking into the pipe. Under vacuum, air from the water usually accumulates in the siphon, gradually throttling the flow.

If the hydraulic grade is raised above the siphon, for example by closing the valve at the outlet of the pipeline, the lower float lifts with a few ounces of positive pressure and releases entrapped air.

Water entering the valve raises the upper float to its seat to prevent leakage from the line. The siphon may be restored to perfect operation by operating the outlet valve of the line. In siphons alternating between vacuum and pressure, the action becomes fully automatic.



### Dimensions & Weight

Size of Valve	1/2"	1"	2"	3"	4"
A	4 3/4"	6 1/4"	8 3/4"	11 1/2"	14"
B	7 3/4"	10 1/8"	15"	17 3/4"	23 3/4"
Weight	12lbs	29lbs	66lbs	127lbs	204lbs
Model #	N5	N10	N20	N30	N40

### Parts List

Part No.	Item	Material
1	TOP	Cast Iron
2	FLANGE	Cast Iron
3	BODY	Cast Iron
4	GASKET	Armstrong
5	SEAT	Buna-N
6S	FLOAT	Stainless Steel
7	HANGER	Stainless Steel
8	CUP	Stainless Steel
9	RIVET	Stainless Steel
10	SCREW	Stainless Steel
11	BOLT	Steel
12	NUT	Steel

\*All Crispin valves are hydrostatically tested at 150% of their maximum working pressure.

Sizes 6" and greater are not available