

Submittal Sheet for Crispin VR/M Series



SUBMITTAL FOR VR/M SERIES

3"-4" VR w/Pressure Air Release Valve

Air Release Valve manufactured in compliance with ANSI/AWWA C512

Date: 2016

Specifications

Vacuum Relief valve(s) shall be installed at high points in the line, or as directed by the engineer to relieve a vacuum due to column separation or draining the line. The valve disc shall be center guided and held normally closed by a stainless steel spring. The seat surfaces shall be stainless steel and Buna-N. The minimum flow area, perpendicular to the direction of flow thru the valve, shall be equal to the pipe area. The outlet shall be protected by a hood and screen. All Crispin Valves are hydrostatically tested at 150% of their maximum working pressure.

3"-4"—The valve(s) materials shall include a ductile iron body, stainless steel spring, stainless steel disc, bushing and seat ring with a Buna-N seat. The inlet shall be _____" ANSI Class (150, 300) Flange. The valve(s) shall be model _____ as manufactured by Crispin-Multiplex Manufacturing Co., Berwick, PA.

Option: A Pressure Air Release Valve shall be piped out of the side of the Vacuum Relief Valve. Refer to the Pressure Air Release Valve Specification. *** For #300 only**

Standard operating pressure for Crispin Air Valves is 20 to 150 PSIG. Please check one of the following if your operating needs differ:

- _____ 2 to 40 PSIG
- _____ 151 to 300 PSIG

Size Specifications

MODEL	INLET SIZE	OUTLET SIZE	A	B	WGHT.
VR31/M5	3" 150# FLG.	3" NPT	11.75	12.25	45
VR33/M5	3" 300# FLG.	3" NPT	11.75	12.25	61
VR41/M5	4" 150# FLG.	4" NPT	13.50	13.25	65
VR43/M5	4" 300# FLG.	4" NPT	13.50	13.25	94

Pressure Air Release Parts

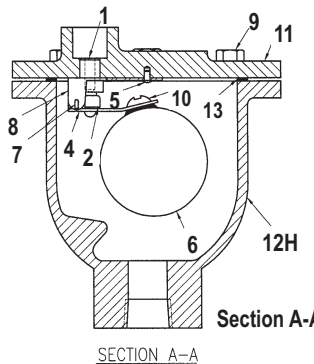
ITEM	DESCRIPTION	MATERIAL	ASTM
1	Valve Seat	Stainless Steel	A276
2	Plunger Button	Viton	D2000
4	Valve Lever	Stainless Steel	A276
5	Screw (Drive)	Stainless Steel	A193
6	Ball Float	Stainless Steel	A240
7	Hinge Pin	Stainless Steel	A580
8	Hinge Butt	Stainless Steel	A240
9	Bolt	Steel	A307
10	Screw	Stainless Steel	A193
11	Flange	Cast Iron	A126 CL.B
12H	1/2 NPT Body	Cast Iron	A126 CL.B
13	Flange Gasket	Armstrong N-8092	N/A
29	Plug	Brass	B505

Vacuum Relief Parts List

ITEM	DESCRIPTION	MATERIAL	ASTM
1FH*	Body	Ductile Iron	A536
2R	Resilient Seat	Cast Stainless Steel/Buna-N	T316/D2000
3	Disc	Cast Stainless Steel	T316
4	Spring	Stainless Steel	A313
5	Bushing	Stainless Steel	T316
6	Screw	Stainless Steel	A193
9	Hood Assembly	Steel	N/A
11	Bolt	Steel	A307
12	Nut	Steel	A563
24	Flange Gasket	Armstrong N-8092	N/A

Connecting Parts

ITEM	DESCRIPTION	MATERIAL	ASTM
CP1	1 x 3 Nipple	Steel	A312
CP2	1 x CL. Nipple	Steel	A312
CP3	1/2"—90° Elbow	Malleable Iron	N/A
CP4	1" Gate Valve	Brass	N/A



Orifice Options

DIAMETER	MAXIMUM PRESSURE
5/32	40 PSIG
1/8	50 PSIG
3/32	85 PSIG
1/16	150 PSIG
3/64	200 PSIG
1/32	300 PSIG

