



US SERIES

Universal Sewer Valves

Universal Sewer Valves

Model Information

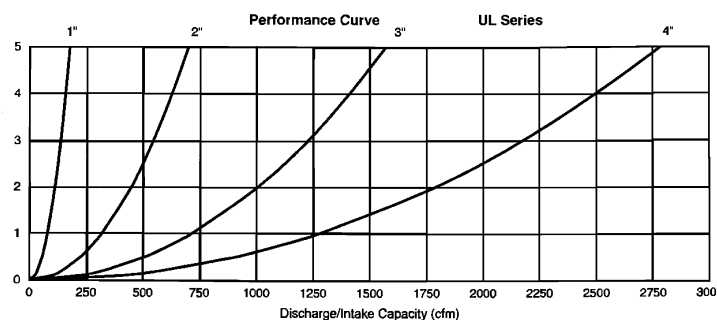
Inlet Size	2"	2"	3"	4"	6"
Outlet Size	1"	2"	3"	4"	6"
Screwed Inlet	USL20 US10S	US20 US20S	US30	US40	
Screwed Inlet w/Backflush	US10SB USL20B	US20SB US20B	US30B	US40B	
125lb Flange		US21	US31	US41	US61
125lb Flange w/Backflush		US21B	US31B	US41B	US61B

Available Orifice Sizes

Max. Op. Pressure	USL20 US10S	US20 US20S	US30	US40	US61
150 psi	3/16"	1/4"	1/4"	1/4"	1/4"
300 psi	3/32"	1/8"	1/8"	1/8"	1/8"

Discharge in SCFM

Op. Pres. PSIG	Orifice Size in Inches		
	1/8"	3/16"	1/4"
150	24.4	54.6	98
300	46.7	105	187



The Air and Vacuum orifice and Pressure Air Release orifice close simultaneously after the pump starts and liquid enters the valve body. The small orifice opens to continuously release accumulating air as it collects in the valve body. The large Air and Vacuum orifice will only open again when a vacuum occurs upon pump shut down.

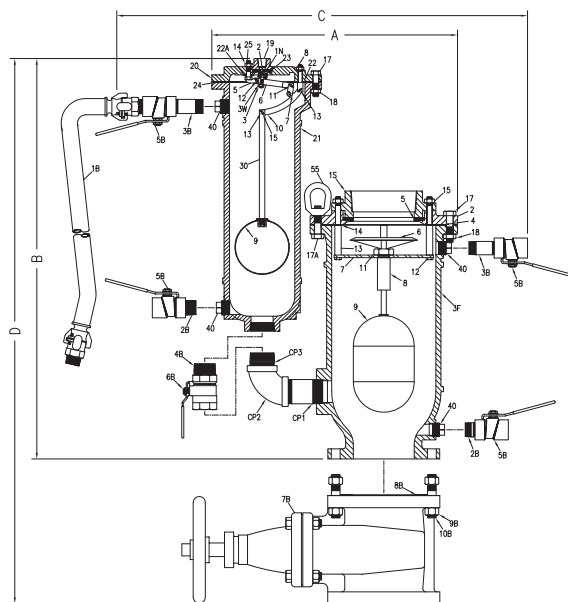


Combination (Dual) Sewer Valves

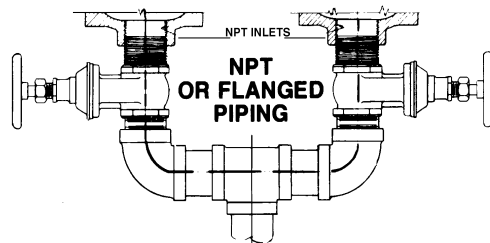
Combination Dimensions

MODEL	SIZE	INLET	A	B	C	D
SL20A/SL20	2"	Yoke Arrang.	28 3/4"	25"	26 1/4"	23"
S20A/SL20	2"	Screw	35 1/4"	27 3/4"	24 3/4"	19 3/4"
S21A/SL20	2"	125 lb. Flng.	42 3/4"	31 3/4"	24 3/4"	19 3/4"
S30A/SL20	3"	Screwed	37"	27 3/4"	25 3/4"	20 3/4"
S31A/SL20	3"	125 lb. Flng.	39 1/2"	27 3/4"	25 3/4"	20 3/4"
S40A/SL20	4"	Screwed	39"	29 3/4"	27 3/4"	22 3/4"
S41A/SL20	4"	125 lb. Flng.	42 1/4"	29 3/4"	27 3/4"	22 3/4"
S61A/SL20	6"	125 lb. Flng.	45 1/4"	31 1/4"	30 1/4"	25 1/2"
S81A/SL20	8"	125 lb. Flng.	45"	29 3/4"	31 3/4"	27 1/2"

Standard Combination Sewer Valve Arrangement



Optional Yoke Arrangement



• Please note that dimensions include backflush attachments

S/SL SERIES