



US SERIES

Universal Sewer Valves

Universal Sewer Valves

Model Information

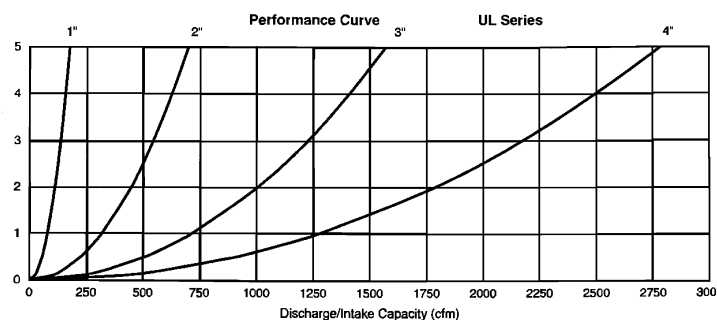
| Inlet Size | 2" | 2" | 3" | 4" | 6" |
|---------------------------|------------------|-----------------|-------|-------|-------|
| Outlet Size | 1" | 2" | 3" | 4" | 6" |
| Screwed Inlet | USL20 US10S | US20 US20S | US30 | US40 | |
| Screwed Inlet w/Backflush | US10SB USL20B | US20SB US20B | US30B | US40B | |
| 125lb Flange | | US21 | US31 | US41 | US61 |
| 125lb Flange w/Backflush | | US21B | US31B | US41B | US61B |

Available Orifice Sizes

| Max. Op. Pressure | USL20 US10S | US20 US20S | US30 | US40 | US61 |
|-------------------|----------------|---------------|------|------|------|
| 150 psi | 3/16" | 1/4" | 1/4" | 1/4" | 1/4" |
| 300 psi | 3/32" | 1/8" | 1/8" | 1/8" | 1/8" |

Discharge in SCFM

| Op. Pres. PSIG | Orifice Size in Inches | | |
|----------------|------------------------|-------|------|
| | 1/8" | 3/16" | 1/4" |
| 150 | 24.4 | 54.6 | 98 |
| 300 | 46.7 | 105 | 187 |



The Air and Vacuum orifice and Pressure Air Release orifice close simultaneously after the pump starts and liquid enters the valve body. The small orifice opens to continuously release accumulating air as it collects in the valve body. The large Air and Vacuum orifice will only open again when a vacuum occurs upon pump shut down.



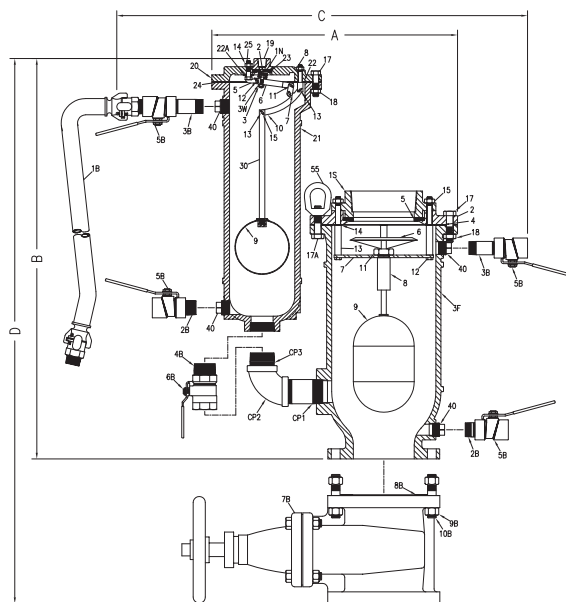
S/SL SERIES

Combination (Dual) Sewer Valves

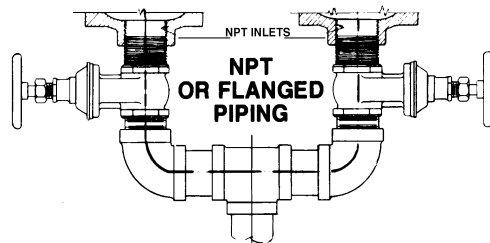
Combination Dimensions

| MODEL | SIZE | INLET | A | B | C | D |
|------------|------|---------------|---------|---------|---------|---------|
| SL20A/SL20 | 2" | Yoke Arrang. | 28 3/4" | 25" | 26 1/4" | 23" |
| S20A/SL20 | 2" | Screw | 35 1/4" | 27 3/4" | 24 3/4" | 19 3/4" |
| S21A/SL20 | 2" | 125 lb. Flng. | 42 3/4" | 31 3/4" | 24 3/4" | 19 3/4" |
| S30A/SL20 | 3" | Screwed | 37" | 27 3/4" | 25 3/4" | 20 3/4" |
| S31A/SL20 | 3" | 125 lb. Flng. | 39 1/2" | 27 3/4" | 25 3/4" | 20 3/4" |
| S40A/SL20 | 4" | Screwed | 39" | 29 3/4" | 27 3/4" | 22 3/4" |
| S41A/SL20 | 4" | 125 lb. Flng. | 42 1/4" | 29 3/4" | 27 3/4" | 22 3/4" |
| S61A/SL20 | 6" | 125 lb. Flng. | 45 1/4" | 31 1/4" | 30 1/4" | 25 1/2" |
| S81A/SL20 | 8" | 125 lb. Flng. | 45" | 29 3/4" | 31 3/4" | 27 1/2" |

Standard Combination Sewer Valve Arrangement



Optional Yoke Arrangement



• Please note that dimensions include backflush attachments