

# Submittal Sheet for Crispin US Series

## 2" (2" I X 1" O) Universal Sewer (stan.)

Manufactured in compliance with ANSI/AWWA C512

Date: 2016

### Specifications

The valve(s) shall be installed at the high points in the system, or at points selected by the engineer. This will permit discharging the surge of air from an empty line when filling, and relieve the vacuum when draining the system. The valve(s) shall also release an accumulation accomplished in a single valve body.

The valve shall operate through a compound lever system that will seal both the pressure orifice and the Air and Vacuum orifice simultaneously.

This lever system shall permit a \_\_\_\_\_" orifice to release an accumulation of air from the valve body at a capacity of \_\_\_\_\_ SCFM of air at a pressure of \_\_\_\_\_ PSIG.

The valve body shall be cast iron. The internal linkage and float shall be stainless steel. The valve(s) shall be Crispin Model \_\_\_\_\_ Universal Sewer Air Valve, as manufactured by Crispin-Multiplex Manufacturing Co., Berwick, PA. The valve(s) shall be \_\_\_\_\_" NPT screwed as ANSI Class (125, 250) flanged inlet connection.

Valves which operate with the Air and Vacuum Valve disc held in a cradle with slots through which the air must flow will not be acceptable.

**Option:** A protectop shall be supplied to prevent dirt and debris from entering the outlet of the valve.

**Option:** The valves shall be supplied with backflushing attachments so that the interior body can be flushed periodically for proper operation.

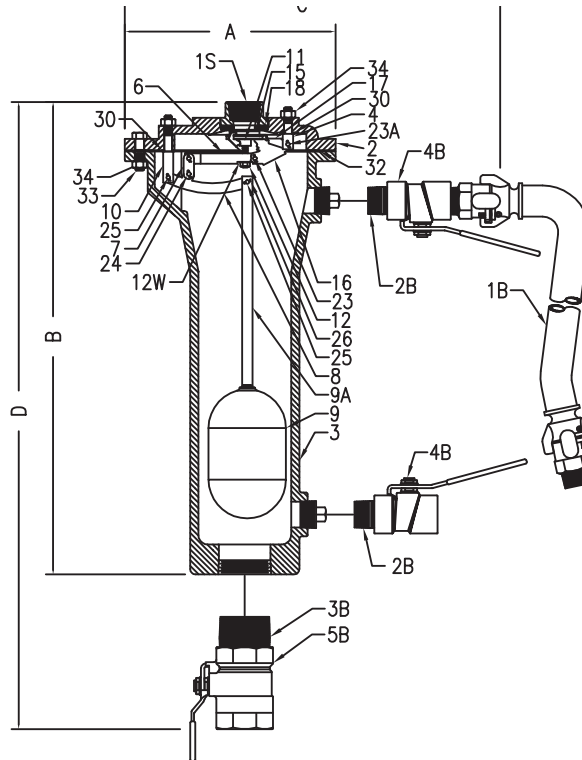
Standard operating pressure for Crispin Air Valves is 20 to 150 PSIG. Please check one of the following if your operating needs differ: \_\_\_\_\_ 2 to 40 PSIG \_\_\_\_\_ 151 to 300 PSIG

### Orifice Options

| DIAMETER | MAX. PRESSURE | FLOW RATE |
|----------|---------------|-----------|
| 3/16     | 150 PSIG      | 54.6 SCFM |
| 3/32     | 300 PSIG      | 26.4 SCFM |

### Size Specifications

| MODEL  | INLET SIZE | OUTLET SIZE | A    | B     | C     | D     | WHT. |
|--------|------------|-------------|------|-------|-------|-------|------|
| USL20  | 2" NPT     | 1" NPT      | 9.75 | 21.50 |       |       | 50   |
| USL20B | 2" NPT     | 1" NPT      |      |       | 12.25 | 27.00 | 62   |



### Parts List

| ITEM | QTY. | DESCRIPTION          | MATERIAL            | ASTM      |
|------|------|----------------------|---------------------|-----------|
| 1S   | 1    | TOP                  | CAST IRON           | A126 CL.B |
| 2    | 1    | FLANGE               | CAST IRON           | A126 CL.B |
| 3    | 1    | BODY                 | CAST IRON           | A126 CL.B |
| 4    | 1    | AIR & VACUUM FULCRUM | STAINLESS STEEL     | A582      |
| 6    | 1    | VALVE LEVER          | STAINLESS STEEL     | A582      |
| 7    | 2    | LINK                 | STAINLESS STEEL     | A240      |
| 8    | 1    | BALL LEVER           | STAINLESS STEEL     | A240      |
| 9    | 1    | FLOAT                | STAINLESS STEEL     | A240      |
| 9A   | 1    | FLOAT ROD            | STAINLESS STEEL     | A582      |
| 10   | 1    | BALL FULCRUM         | STAINLESS STEEL     | A582      |
| 11   | 1    | PLUNGER              | S/S & BUNA-N RUBBER | D2000     |
| 12   | 1    | PLUNGER NUT          | STAINLESS STEEL     | A194      |
| 12W  | 1    | LOCK WASHER          | STAINLESS STEEL     | A240      |
| 15   | 1    | PRESSURE SEAT        | STAINLESS STEEL     | A582      |
| 16   | 1    | PRESSURE FULCRUM     | STAINLESS STEEL     | A240      |
| 17   | 1    | SEAT CAGE            | STAINLESS STEEL     | A240      |
| 18   | 1    | SEAT                 | BUNA-N RUBBER       | D2000     |
| 23   | 1    | BEARING PIN          | STAINLESS STEEL     | A582      |
| 23A  | 1    | BEARING PIN          | STAINLESS STEEL     | A582      |
| 24   | 2    | BEARING PIN          | STAINLESS STEEL     | A582      |
| 25   | 2    | BEARING PIN          | STAINLESS STEEL     | A582      |
| 26   | 6    | COTTER PIN           | STAINLESS STEEL     | A313      |
| 30   | 2    | FULCRUM WASHER       | FIBER               | N/A       |
| 32   | 1    | FLANGE GASKET        | ARMSTRONG N-8092    | N/A       |
| 33   | 7    | BOLT                 | STEEL               | A307      |
| 34   | 9    | NUT                  | STEEL               | A563      |
| *40  | 2    | FLUSH PLUG           | CAST IRON           | A126 CL.B |

### OPTIONAL BACK FLUSH COMPONENTS

|     |   |               |                      |      |
|-----|---|---------------|----------------------|------|
| *1B | 1 | HOSE ASSEMBLY | S/S, CAD PLT, RUBBER | N/A  |
| *2B | 2 | NIPPLE        | STEEL                | A53  |
| *3B | 1 | NIPPLE        | STEEL                | A53  |
| *4B | 2 | BALL VALVE    | BRASS                | B505 |
| *5B | 1 | BALL VALVE    | BRASS                | B505 |



SUBMITTAL SHEET FOR US SERIES