



# SUBMITTAL SHEET FOR US SERIES

## Submittal Sheet for Crispin US Series

# 1"-2" (2" I X 1" O) Universal Sewer (SB)

Manufactured in compliance with ANSI/AWWA C512

Date: 2016

### Specifications

The valve(s) shall be installed at the high points in the system, or at points selected by the engineer. This will permit discharging the surge of air from an empty line when filling, and relieve the vacuum when draining the system. The valve(s) shall also release an accumulation accomplished in a single valve body.

The valve shall operate through a compound lever system that will seal both the pressure orifice and the Air & Vacuum orifice simultaneously.

This lever system shall permit a \_\_\_\_\_" orifice to release an accumulation of air from the valve body at a capacity of \_\_\_\_\_ SCFM of air at a pressure of \_\_\_\_\_ PSIG.

The valve body shall be cast iron. The internal linkage and float shall be stainless steel. The valve(s) shall be Crispin Model \_\_\_\_\_ Universal Sewer Air Valve, as manufactured by Crispin-Multiplex Manufacturing Co., Berwick, PA. The valve(s) shall be \_\_\_\_\_" NPT screwed as ANSI Class (125, 250) flanged inlet connection. Valves which operate with the Air & Vacuum Valve disc held in a cradle with slots through which the air must flow will not be acceptable.

**Option:** A protectop shall be supplied to prevent dirt and debris from entering the outlet of the valve.

**Option:** The valves shall be supplied with backflushing attachments so that the interior body can be flushed periodically for proper operation.

Standard operating pressure for Crispin Air Valves is 20 to 150 PSIG. Please check one of the following if your operating needs differ: \_\_\_\_\_ 2 to 40 PSIG \_\_\_\_\_ 151 to 300 PSIG

### Size Specifications

MODEL	INLET SIZE	OUTLET SIZE	A	B	C	D	WHT.
US10S	2" NPT	1" NPT	10.25	12.75			49
US10SB	2" NPT	1" NPT			14.75	17.75	60
US20S	2" NPT	1" NPT	10.25	12.75			54
US20SB	2" NPT	1" NPT			14.75	17.75	66

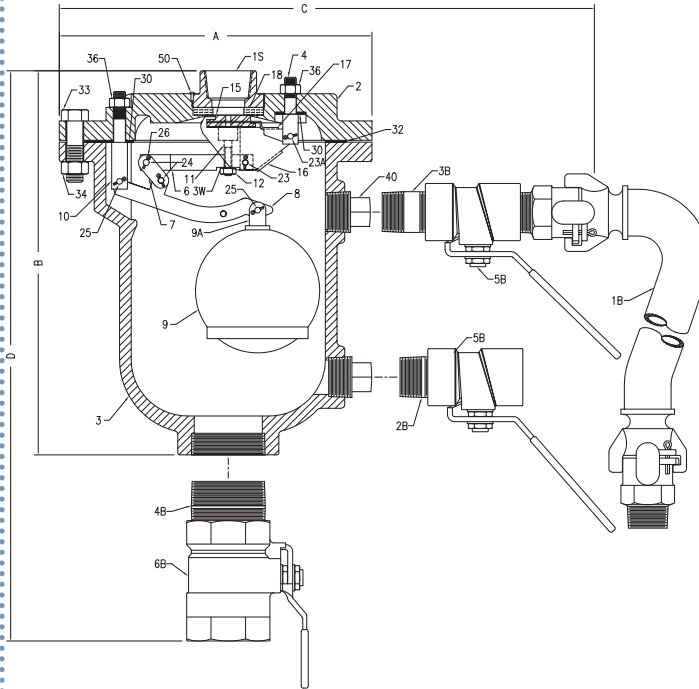
### 1" Valve Orifice Options

DIAMETER	MAX. PRESSURE	DISCHARGE RATE
3/16	150 PSIG	54.6 SCFM
3/32	300 PSIG	26.4 SCFM

### 2" Valve Orifice Options

DIAMETER	MAX. PRESSURE	DISCHARGE RATE
1/4	150 PSIG	98 SCFM
1/8	300 PSIG	46.7 SCFM

\* Parts are interchangeable & optional at customer's request



### Parts List

ITEM	DESCRIPTION	MATERIAL	ASTM
1S	TOP	CAST IRON	A126 CL.B
2	FLANGE	CAST IRON	A126 CL.B
3	BODY	CAST IRON	A126 CL.B
3W	LOCK WASHER	STAINLESS STEEL	A240
4	AIR/VACUUM FULCRUM	STAINLESS STEEL	A582
6	VALVE LEVER	STAINLESS STEEL	A582
7	LINK	STAINLESS STEEL	A240
8	BALL LEVER	STAINLESS STEEL	A240
9	FLOAT	STAINLESS STEEL	A240
9A	FLOAT ROD	STAINLESS STEEL	A582
10	BALL FULCRUM	STAINLESS STEEL	A582
11	PLUNGER	BUNA-N RUBBER & S/S	D2000/A193
12	PLUNGER NUT	STAINLESS STEEL	A194
15	PRESSURE SEAT	STAINLESS STEEL	A582
16	PRESSURE FULCRUM	STAINLESS STEEL	A582
17	SEAT CAGE	STAINLESS STEEL	A240
18	AIR/VACUUM SEAT	BUNA-N RUBBER	D2000
23	BEARING PIN	STAINLESS STEEL	A582
23A	BEARING PIN	STAINLESS STEEL	A582
24	BEARING PIN	STAINLESS STEEL	A582
25	BEARING PIN	STAINLESS STEEL	A582
26	COTTER PIN	STAINLESS STEEL	A493
30	FULCRUM WASHER	FIBER	D710
32	FLANGE GASKET	ARMSTRONG N-8092	N/A
33	FLANGE BOLT	STEEL	A307
34	NUT	STEEL	A563
36	FULCRUM NUT	STEEL	A563
*40	FLUSH PLUG	CAST IRON	A126 CL.B
50	INTERFERENCE PIN	STAINLESS STEEL	A582
<b>OPTIONAL BACK FLUSH COMPONENTS</b>			
*1B	HOSE ASSEMBLY	CAD PLT. STEEL & RUBBER	N/A
*2B	NIPPLE	STEEL	A53
*3B	NIPPLE	STEEL	A53
*4B	NIPPLE	STEEL	A53
*5B	BALL VALVE	BRASS	N/A
*6B	BALL VALVE	BRASS	N/A