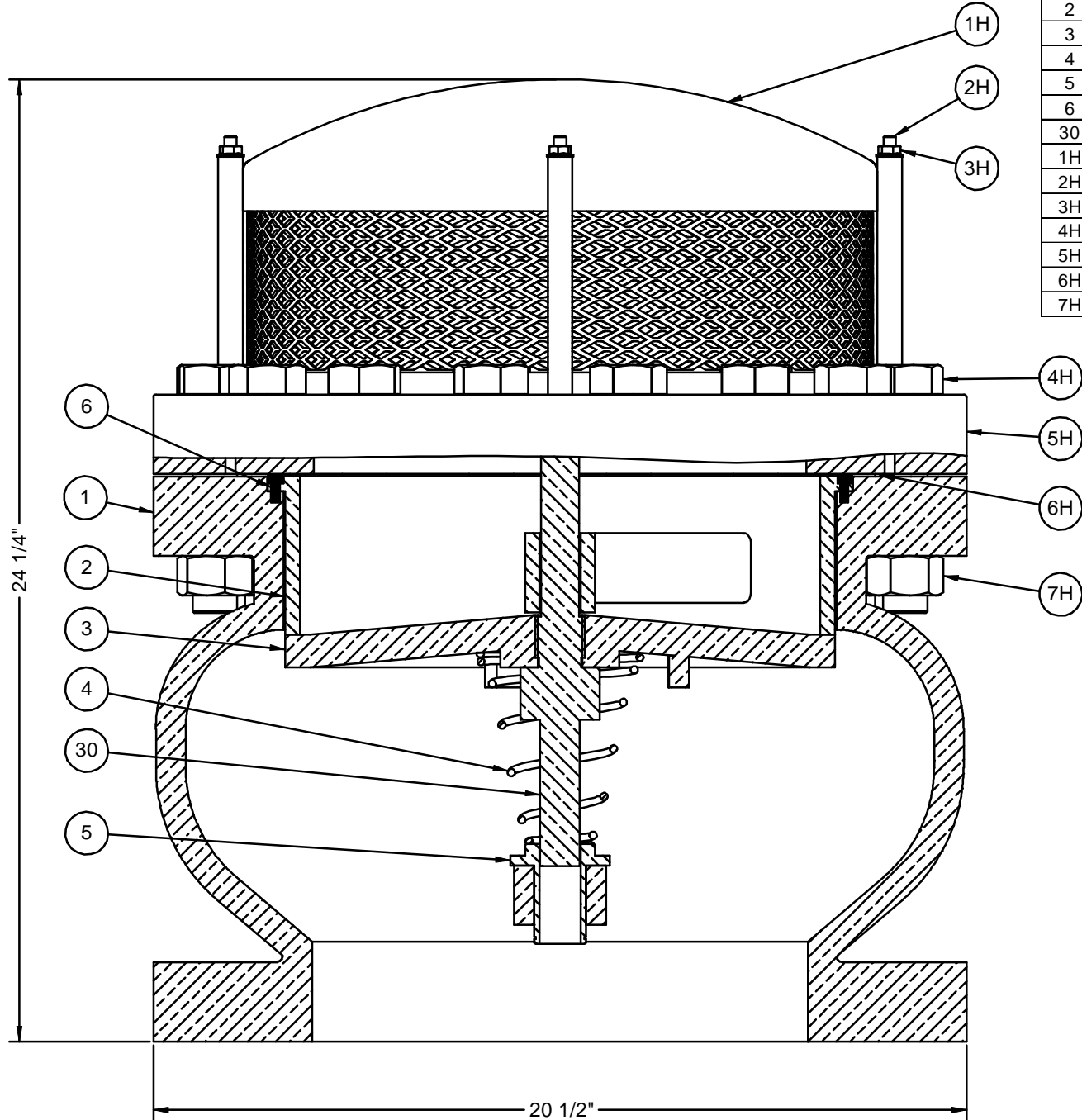


KEY	DWG. NO.	DESCRIPTION	MATERIAL	QTY.
1	1212-1FH	BODY	CAST IRON	1
2	1212-2R	RESILIENT SEAT	BUNA-N/BRONZE	1
3	1212-3	DISC	BRONZE	1
4	1212-4	SPRING	STAINLESS STEEL	1
5	1212-5	BUSHING	BRONZE	1
6	303-6	SCREW	STAINLESS STEEL	2
30	1212-30	SHAFT	BRONZE	1
1H	VR12H	HOOD ASSEMBLY	STEEL	1
2H	120-10B	THR'D ALL ROD	STEEL	4
3H	1-12F	FLANGE NUT	STEEL	4
4H	1212-11H	BOLT	STEEL	16
5H	1212-9H-HD	HD FLANGE	CAST IRON	1
6H	1212-24	GASKET	ARMSTRONG	1
7H	2020-12	NUT	STEEL	16

INLET FLANGE DATA	
FLANGE DIA.	22.500
FLANGE THICKNESS	2.000
BOLT CIRCLE DIA.	17.750
NUMBER OF BOLTS	16
BOLT HOLE DIA.	1.250



- NOTES:
1. APPROXIMATE WEIGHT: 408 LBS.
  2. INLET SIZE 12" ANSI B16.1 CLASS 250 FLANGE.  
OUTLET SIZE: 12" HOODED AND SCREENED.

DO NOT SCALE DRAWING		<b>Crispin Valves</b>	
DIMENSIONS ARE IN INCHES UNLESS OTHERWISE SPECIFIED:		12" CLASS 250 VACUUM RELIEF VALVE	
FINISHED LINEAR TOLERANCES: ±0.015		SIZE	REV
UNFINISHED LINEAR TOLERANCE: +0.050 -0.020		C	0
FINISHED ANGULAR TOLERANCE: ±2°		DWG. NO.	VR122
DRAWN	DATE	SCALE	SHEET 1 OF 1
CHECKED		01/16/12	
DRAWN	C. GEARY		

REV	DESCRIPTION	DATE	APPROVED
REVISIONS			